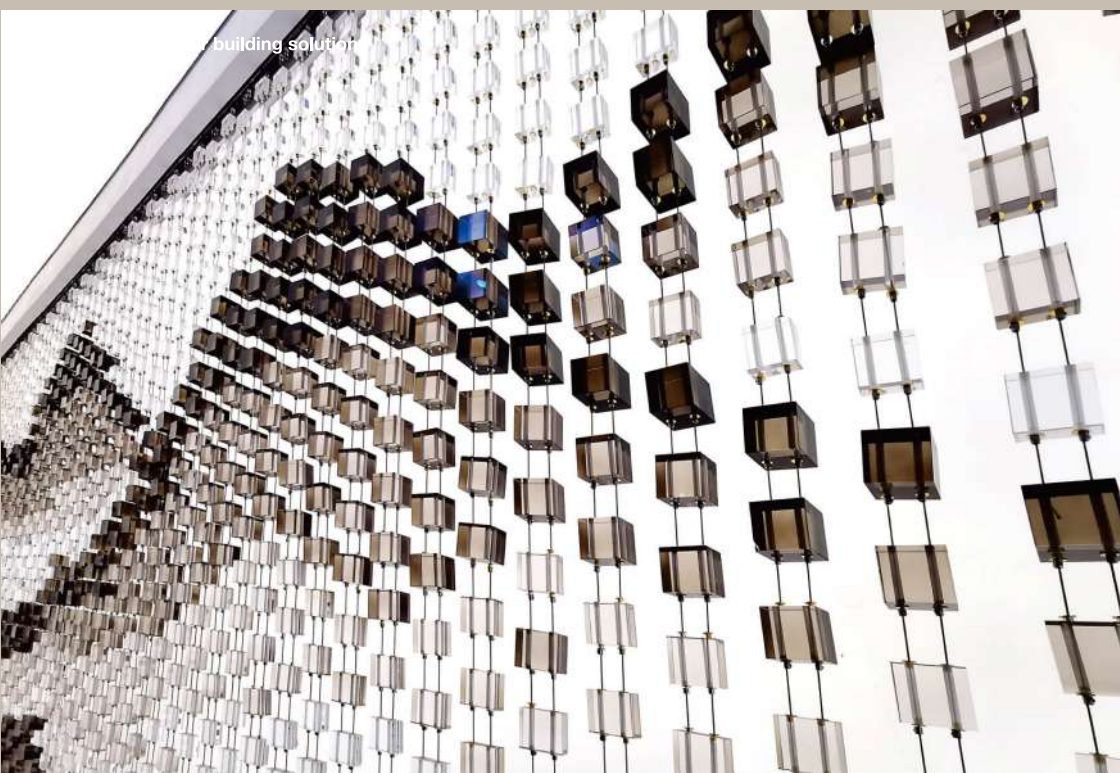




# Decorative glass solutions I



building solution



WALL PANEL

# LEI TUNG STATION

GLASS SUPPLY



WALL PANEL

Completion Date 2016  
 Glass Type Glasslam C.I.P. Laminated Crystal Glass with Graphic, DFI Treatment and Heat Soaked Test  
 Area 350M<sup>2</sup>  
 - Public Space -



CANOPY

# HIN KENG STATION

GLASS SUPPLY



## The Art of Patchwork

Patchwork art and glass combination provides a uniqueness for the new town, ultra-transparent glass and specialized printing technology, resistant of sunlight and rains, the product still looks new as the time it installed .

Completion Date	2016
Glass Type	Glasslam C.I.P. Laminated Tempered Crystal Glass with Graphic, DFI Treatment and Heat Soaked Test
Area	360M <sup>2</sup>



WALL PANEL

## CAUSEWAY BAY, TSIM SHA TSUI, CENTRAL

GLASS SUPPLY

- Public Space -



## YUEN LONG HIGH WAY

GLASS SUPPLY

- Public Space

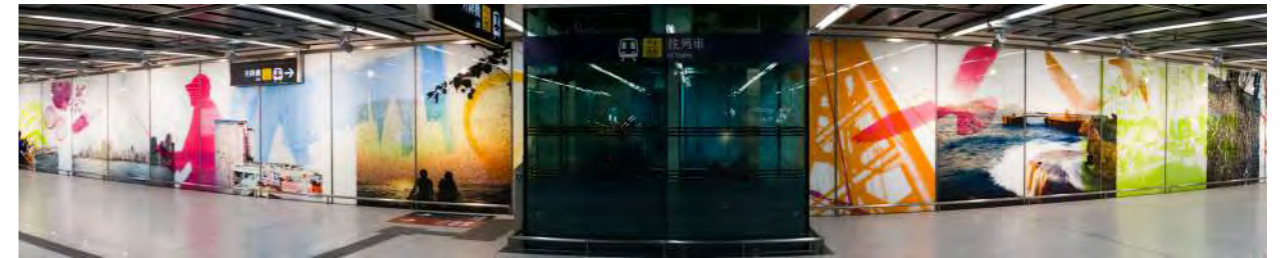


Completion Date 2015  
 Glass Type Glasslam C.I.P. Laminated Tempered Glass with Vetrocolor Coating, Etched Pattern, DFI Treatment and Heat Soaked Test  
 Area 230M<sup>2</sup>  
 - Public Space -



## TAI TONG ROAD LRT STATION

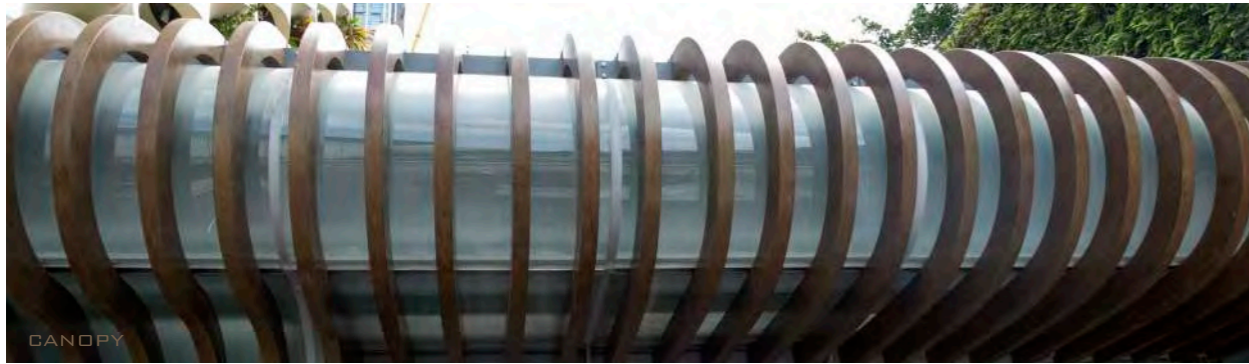
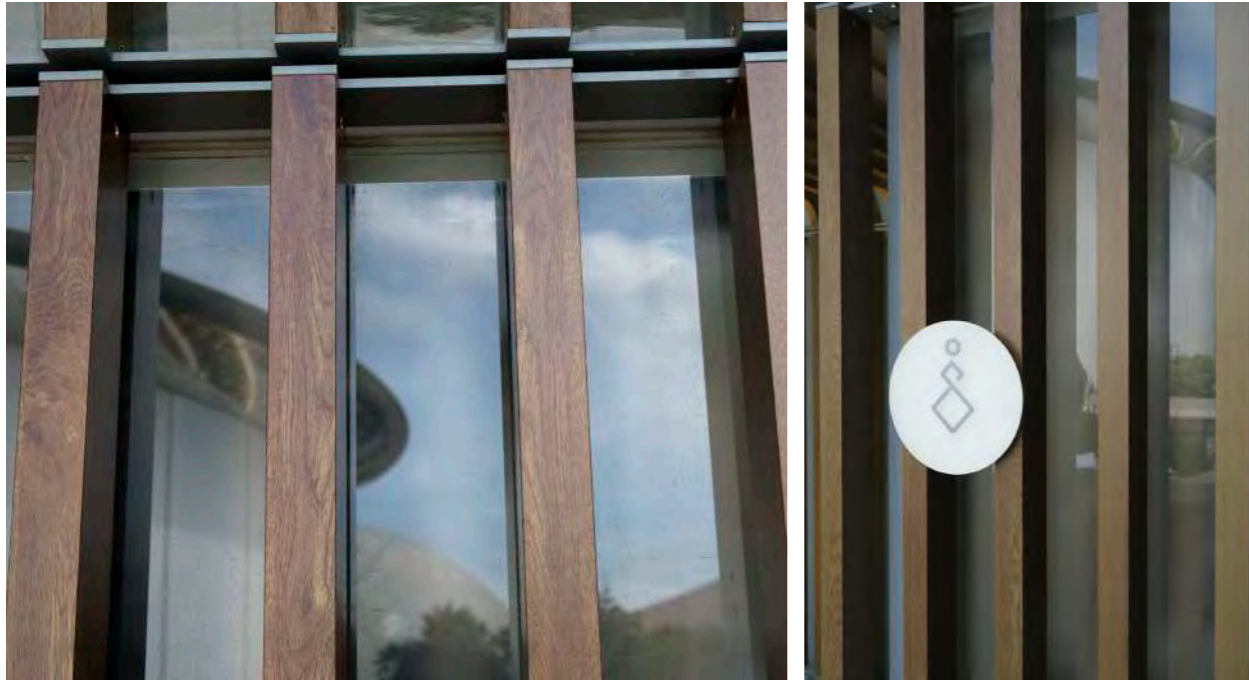
GLASS SUPPLY & INSTALL



## KENNEDY TOWN, HKU & SAI YING PUN MTR STATIONS

GLASS SUPPLY

Completion Date	2015
Glass Type	Glasslam C.I.P. Laminted Tempered Glass with Digital Printing, DFI Treatment and Heat Soaked Test 12mm
Thickness	+12mm
Area	500M <sup>2</sup>
- Public Space -	



Completion Date 2017  
 Glass Type Glasslam C.I.P. Laminated Tempered Glass with Heat Soaked Test  
 Thickness 10mm + 10mm

- Public Space -



## PUBLIC LAVATORY (Tsim Sha Tsui East)

GLASS SUPPLY



Completion Date 2015  
 Glass Type Glasslam C.I.P. Laminated Tempered Mirror with Etched  
 Pattern

- Hotel Space -



## THE HARD ROCK HOTEL

GLASS SUPPLY





WALL PANEL

## CROWN PLAZA

GLASS SUPPLY & INSTALL

Hotel Space -



FACAD

## No.1 PEKING ROAD

GLASS SUPPLY

Facade Wall



## LUK YEUNG GALLERIA

GLASS SUPPLY

- Facade Wall -



## HARBOUR NORTH

GLASS SUPPLY

Facade Wall



Completion Date 2012  
Glass Type Vetrolcolor Coating Tempered Crystal Glass with  
Acid Etched Pattern and Heat Soaked Test

500M<sup>2</sup>

acade Wall -

## WINDSOR HOUSE

GLASS SUPPLY



## THE REACH

GLASS SUPPLY



Completion Date 2013  
Glass Type Glasslam C.I.P. Laminated Kiln Formed Tempered Glass with Heat Soaked Test/ Glasslam C.I.P. Laminated with Vetrocolor Coating Pattern with Heat Soaked Test/ Glasslam C.I.P. Laminated Tempered Glass with Coating Reflective Pattern & Ceramic Fritted Dot Pattern with Heat Soaked Test  
Thickness 10mm + 15mm  
15mm + 15mm

- Facade Wall -



## BLENDS IN WITH THE NATURAL ENVIRONMENT

Located in Yuen Long No.11 Shap Pat Heung Road, the enormous developed residential project, emphasizes with an environment of quiet but well recognized, therefore it has to be refurbished. The Reach has massively adopted decorative glass in a wide range of external application, including the façade wall, covered walkway and balustrade, each demonstrating special fabrication technique.

Those three external glass applications all based in tree patterns but in order to show the different layers, we have applied variety of techniques to make customers feel like they are situating in the environment. Firstly, for the façade wall, we have used kiln forming technology. Decorated with reflective coating on the covered walkway and Vetrocolor Coating on the balustrade which makes the residents and guests feel like they are in the forest.



CANOPY

## THE PRINCE HOTEL

Completion Date 2012  
 Glass Type Glasslam Fabric Laminated Mirror with  
 Flinted Pattern Treated with DFI Treatment  
 Thickness 8mm + 6mm

GLASS SUPPLY



## PIVOT OF THE CITY

Situating in Tsim Sha Tsui, The Prince Hotel is the pivot of HK. GLASSLAM Laminated Glass decorative technique creates attraction from the crowd and perfectly presents the beauty of art.

Applying laminated glass to glamorous external wall finishes not merely expresses the elegance; its extraordinary durability flawlessly embraces the coexistence of beauty and endurance. Sparkling in nights, the wall is the spotlight in travelers eyes. Utilizing GLASSLAM Laminated Glass on the external wall, it is the best solution to triumph the challenges of exquisiteness and sturdiness.

Facade Wall



LIFT LOBBY

## TELFORD PLAZA

GLASS SUPPLY & INSTALL



RESTROOM



WALL PANEL

Completion Date 2017  
 Glass Type Glasslam C.I.P Laminated Crystal Glass Lightbox with Pattern and DFI Treatment/Glasslam Mirror with Pattern and DFI Treatment/  
 GlassLam C.I.P Laminated Mirror Lightbox with Pattern  
 Area 1,200M<sup>2</sup>  
 - Shopping Mall -



ESCALATOR

## THE PROMENADE (Galaxy Macau)

GLASS SUPPLY

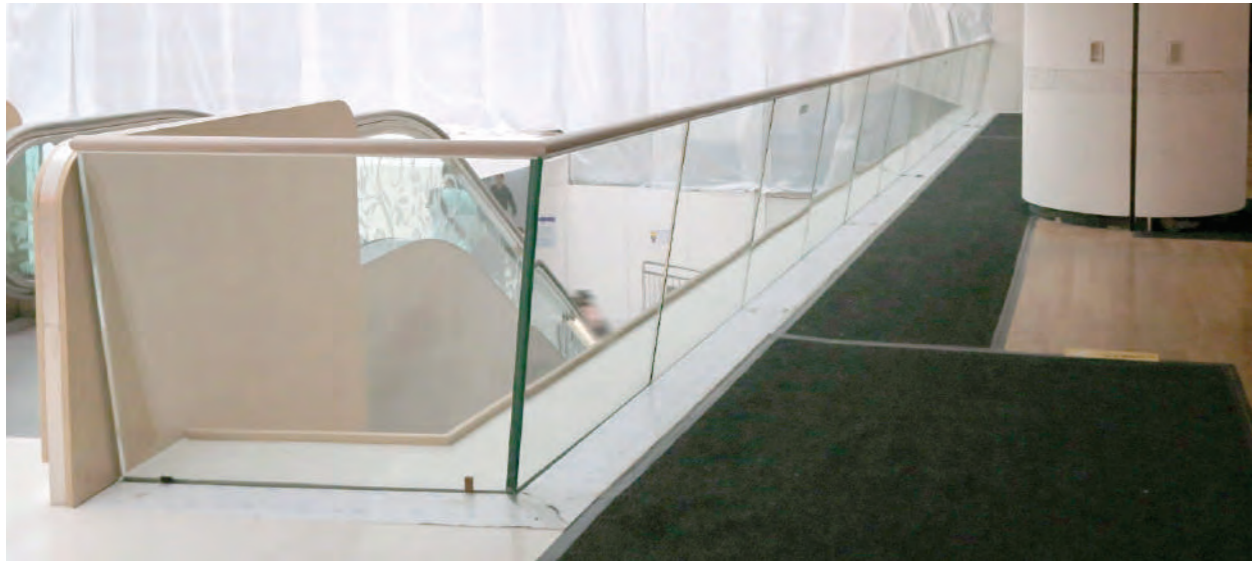


Completion Date 2015  
Glass Type Glasslam C.I.P. Laminated Glass with Gold Pattern and Sand-blasted Pattern/  
Glasslam C.I.P. Laminated Glass + Digital Printing  
Thickness 6mm + 6mm  
- Shopping Mall -





BALUSTRADE

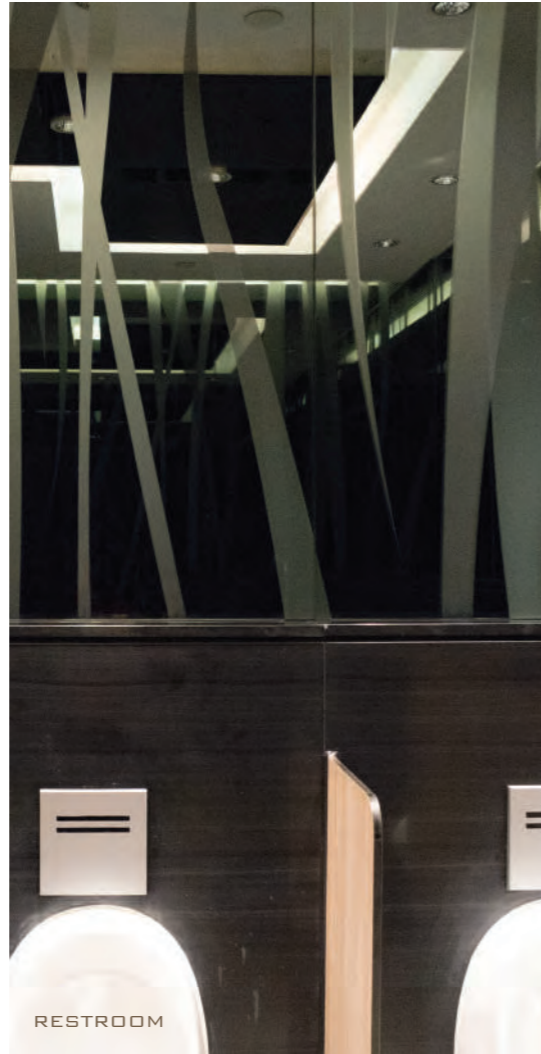


Completion Date 2016  
Glass Type Glasslam C.I.P. Laminated Tempered Crystal Glass  
with Heat Soaked Test/  
Thickness 19mm+19mm / 12mm  
Area 2,420M<sup>2</sup>  
Shopping Mall -



## SUNSHINE CITY PLAZA

GLASS SUPPLY & INSTALL



Completion 2015-2017  
 Date Glass Type Tempered Glass with Acid Etched Pattern  
 Glasslam C.I.P Laminted Mirror Pattern  
 Area 1,200M<sup>2</sup>  
 - Shopping Mall -

## METRO CITY PLAZA

GLASS SUPPLY & INSTALL



# POPCORN

GLASS SUPPLY & INSTALL

Completion Date	2012
Glass Type	Glasslam Safety Grey Mirror / Glasslam C.I.P. Laminated Tempered Glass/ Glass C.I.P. Laminated Glass with Chemical Etch
Area	Pattern
- Shopping Mall -	2,800M <sup>2</sup>

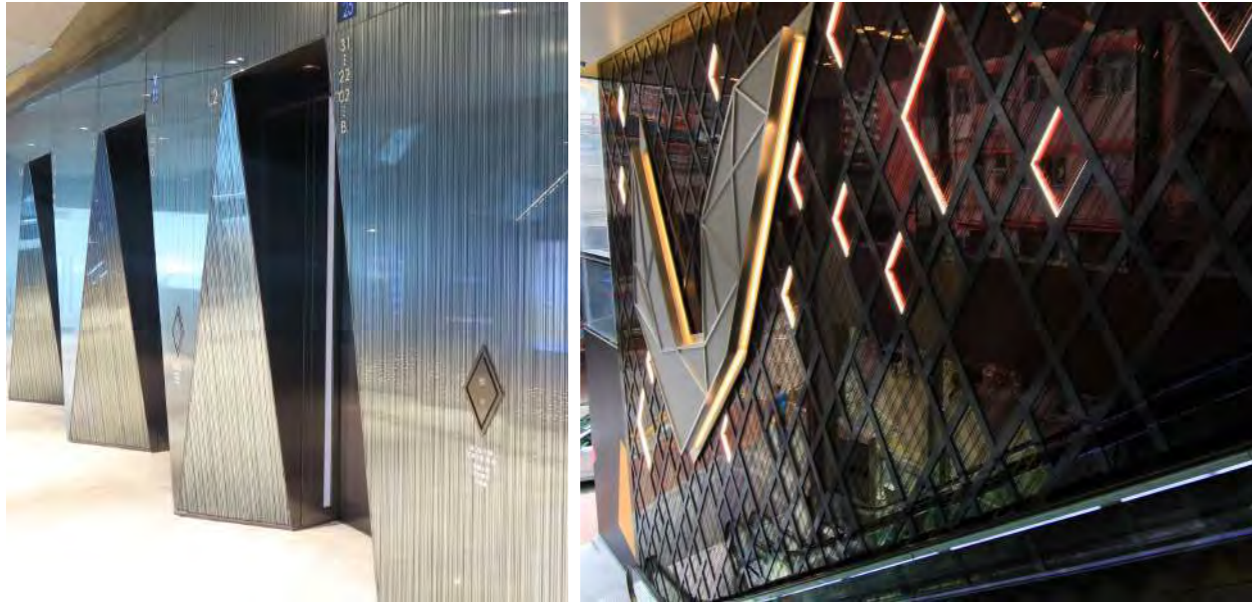


Completion Date 2013  
Glass Type Glasslam C.I.P. Laminated Glass with Vetrocolor Coating Pattern  
6mm + 6mm  
Thickness 2,000M2  
Shopping Mall -



## GRAND CENTURY PLACE - MOKO

GLASS SUPPLY



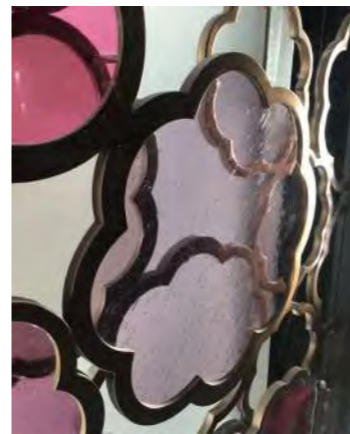
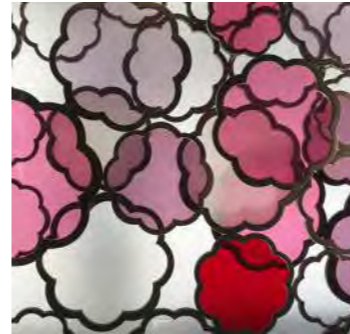
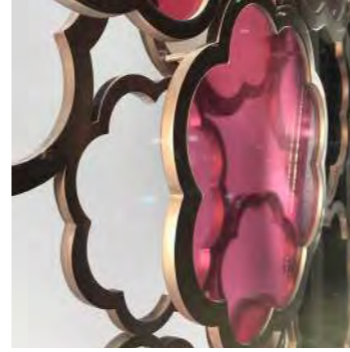
Area 1500M<sup>2</sup>

Completion Date 2016

## V- Point

GLASS SUPPLY & INSTALL

Shopping Mall



## Fine Cut Texture Glass in Flower Shape

(Singapore Project)

GLASS SUPPLY



LIFT LOBBY

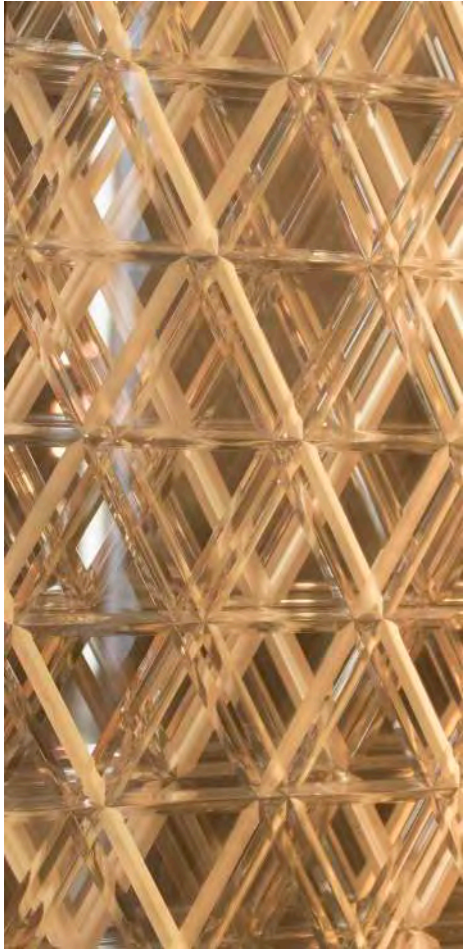
PEONIA DIAMOND (Elements)

GLASS SUPPLY & INSTALL



Completion Date 2017  
 Glass Type Glasslam C.I.P. Laminated Glass with Graphic and Surface Pattern/  
 Glasslam C.I.P. Laminated Pattern Glass with Mirror Pattern

Shop Front



Shop Front

DFS(Macau Studio City)

GLASS SUPPLY



Completion Date 2012  
Glass Type Glasslam Diamond Shape Crystal Glass Column  
Thickness 40mm Diamond Shape Glass  
Area 1710 pcs  
Shop Front



BURBERRY(Pacific Place)

GLASS SUPPLY

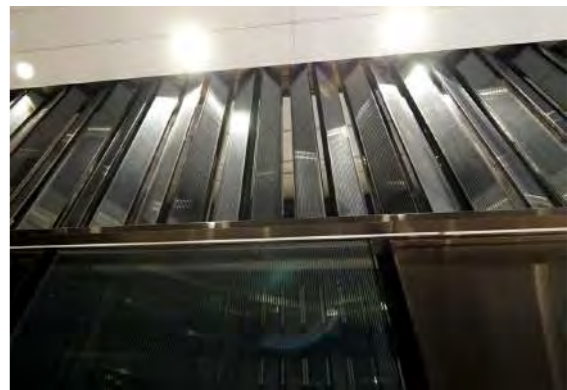




Completion Date 2015  
Glass Type Glasslam C.I.P. Laminated Curved Glass with Mirror Pattern  
Thickness 10mm + 10mm  
Area  
Shop Front 400M<sup>2</sup>

## VALENTINO, BEIJING

GLASS SUPPLY



## No.41 HEUNG YIP ROAD

GLASS SUPPLY

Completion Date 2016-2017  
Glass Type Glasslam C.I.P. Laminated Mirror with  
Thickness Pattern 8mm+5mm  
Area 450M<sup>2</sup>

Shop Front



BALUSTRADE

Completion Date 2016  
Glass Type Glasslam C.I.P. Laminated Tempered Glass with  
Area

5.11 2

Work Office -



## GOLDIN FINANCIAL GLOBAL CENTRE

GLASS SUPPLY & INSTALL



PARTITION  
LIFT LOBBY



DOOR



RESTROOM



WALL PANEL

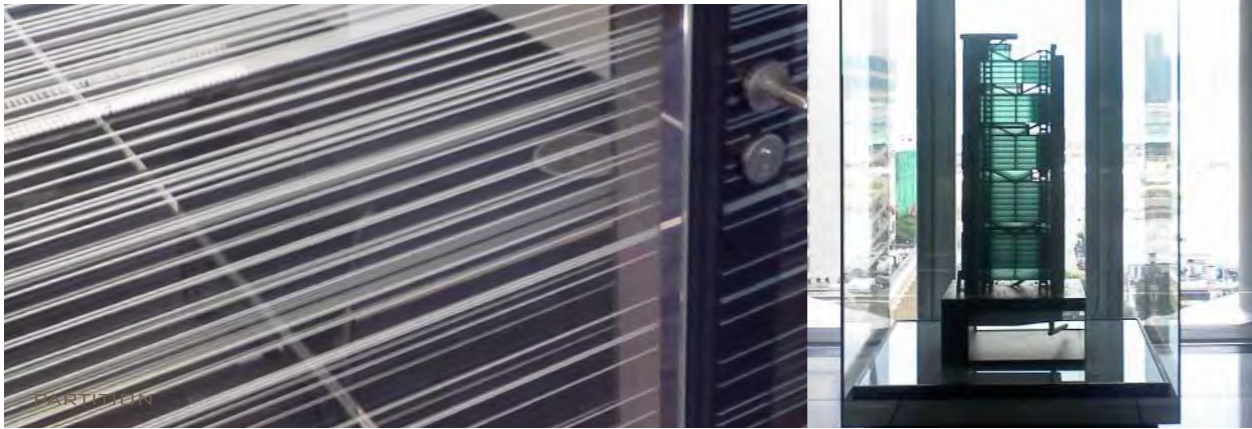
# THE HONG KONG JOCKEY CLUB

GLASS SUPPLY & INSTALL

Glass Type    **laminated**    **etch**    **reflective**  
 Sandblasted    **Color C.I.P. Laminated Mirror with Chemical Etch / Glasslam C.I.P. Laminated Glass with Sand-blasted**

Area    **90 M<sup>2</sup>**

Work Office



Completion Date 2011  
Glass Type Glasslam C.I.P. Laminated Tempered Crystal Glass with Pattern  
Thickness 10mm

Work Office

## HSBC HEAD OFFICE

GLASS SUPPLY



## WORLD FINANCIAL CENTER

GLASS SUPPLY & INSTALL

Completion Date 2009  
Glass Type Artistic Scalene Triangle Glass  
Area Boxes 1,200 boxes

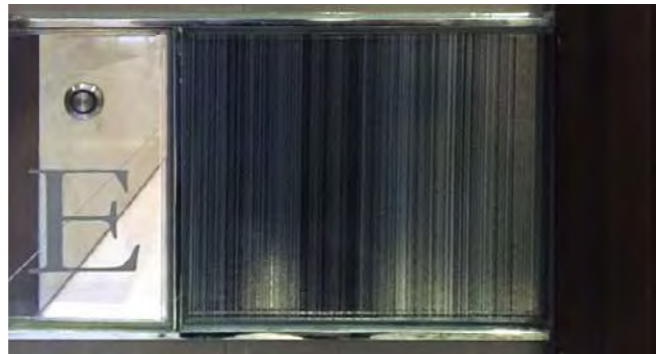


## SECRET BEHIND THE CULTURAL FUSION ART

Utilizing an extraordinary combination technique on the glass crystal wall installation, the wall constitutes of 1,200 unique crystal glass boxes.

With each glass surface applying diverse grades of glass, crystal mirror as the back and reflective coating glass as the bevel, together with the GLASSLAM Laminated Glass decorative technique, a magnificent and dazzling visual effect is created on the crystal glass wall.

The walls unfold from clouds of color, streaked with golden strands and brilliance of the crystals at the corners, fully demonstrates Hammer's grand idea, "perfection emerges from imperfection", with the stereoscopic and colorful glass artwork.



Completion Date 2017  
 Glass Type Glasslam C.I.P. Laminated Mirror with Sand-Blasted  
 Pattern/ Glasslam C.I.P Laminated Mirror with Fabric  
 Area 3,000M<sup>2</sup>  
 - Living Space -

## THE LONG BEACH

GLASS SUPPLY & INSTALL





BATHROOM

## CENTURY LINK

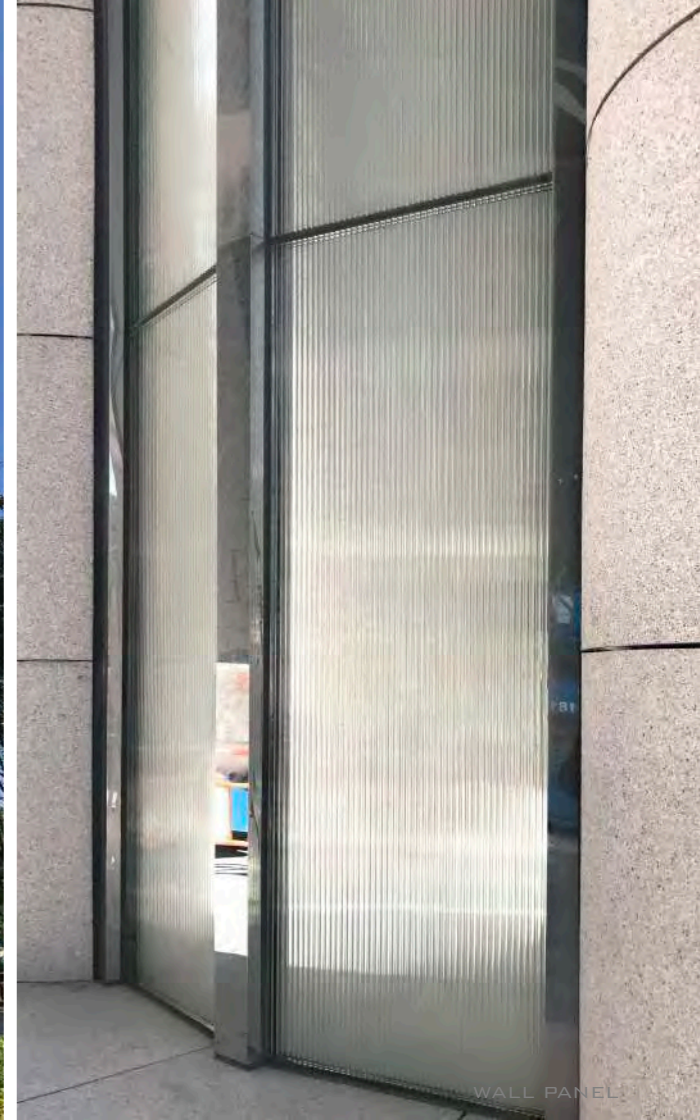
Completion Date 2016  
Glass Type Tempered Crystal glass with Heat Soaked Test  
Area 2500M<sup>2</sup>

GLASS SUPPLY & INSTALL



## THE BEAUMOUNT

GLASS SUPPLY



WALL PANEL



LIFT LOBBY



FACADE WALL

# SOUTH COAST

GLASS SUPPLY & INSTALL

Living Space

# ALTAMIRA (No.18 Po Shan Road)

GLASS SUPPLY

- Living Space -



PATINA(No.18 Junction Road)

GLASS SUPPLY & INSTALL

Living Space

K.CITY

GLASS SUPPLY

- Living Space -



GLASS PRODUCTS

# Glasslam<sup>®</sup>

## C.I.P. Laminated Glass



## GLASSLAM C.I.P. Laminated Glass

Glasslam C.I.P Laminated glass is available in any customized color necessary for your specific application. It stops 99% of U.V. radiation, therefore preventing fading of carpets, furniture and store displays. No special method of cleaning is needed for Glasslam products and they are warranted for 10 years.

---

### COMPLIES WITH

ASTM C 1048 : Standard Specification for Heat Strengthened and Fully Tempered Flat Glass

ASTM C 1036 : Standard Specification for Flat Glass

BS 952 : Cast-in-Place Resin Laminated Glass perform satisfactorily for Pattern Glass with Deep Pattern and Toughened Glass

ANSI STANDARD Z26.1-1977, Z26.1A-1980 AND Z26.1-1983

Light Stability

Luminous Transmittance

Humidity

Boil

Impact – Dart, 30 Feet

Impact – Ball, 30 Feet

Deviation And Distortion

Abrasion Resistance

Penetration Resistance

SOUTH FLORIDA BUILDING CODE SECTIONS 2309, 2314

AND 2315 Large Missile Test (50' per second)

Small Missile Test (80 FPS)

Cyclic Wind Pressure, 9000 Cycles

Self Ignition, ASTM D-1929

Rate of Burning, ASTM D-635

Smoke Density, ASTM E84

Weather Test 6500 Watt Lamp For 4500 hrs

Tensile Test, ASTM D-638



Diamon-Fusion® is a patented nanotechnology improves and protects the surfaces of glass, tile, porcelain and most silica-based surfaces.

Surface treated with Diamon-Fusion® become:

- Highly water repellent (hydrophobic);  
less water on the results in less frequent cleanings & a reduction in mold and bacteria
- Oil repellent
- Scratch resistant
- Resistant to leaching of calcium and sodium (etching caused by hard water)
- At least 20% more brilliance (shine in glass surfaces)



## SWITCHABLE LIQUID GLASS

Our Switchable Liquid Glass is a laminated glass with Switchable coated polyester film inside the interlayer. With the LCP (Liquid Crystal Polymer) coated film, it allows light to pass through the glass when the power has switched ON and blocks the flow of light when the power is OFF. You could designate your own glass to any specification using our industrial equipment to cut, polish, sandblast, toughen, print, edge, drill, and so on.

### COMPLIES WITH

- ANSI Z-26
- US Safety Standard -
- AS 2208
- Australian Standard
- BS 6206 CLASS
- UK Standard -

# SWITCHABLE LIQUID GLASS



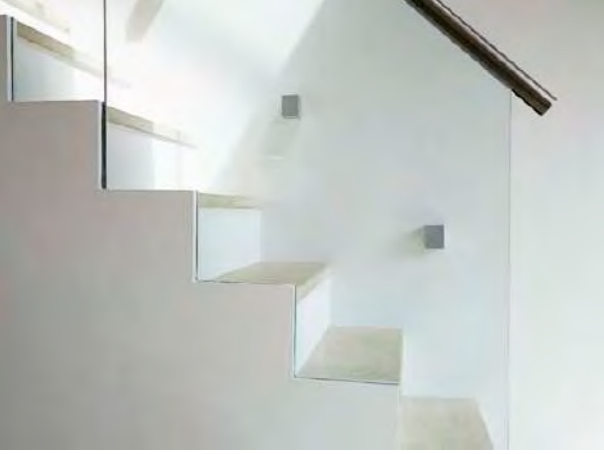


## Sustainable Mirror

Sustainable Mirror delivers new standards of resistance to these elements, and it guarantee 10 Year Warrantee:

- Dramatically reduces the occurrence of black edge corrosion
- Significantly increases resistance to ammoniated cleaners -
  - Superior resistance to ferric chioride testing
  - Superior performance in CASS test -

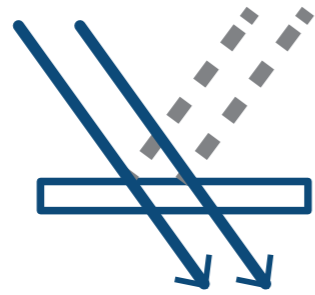




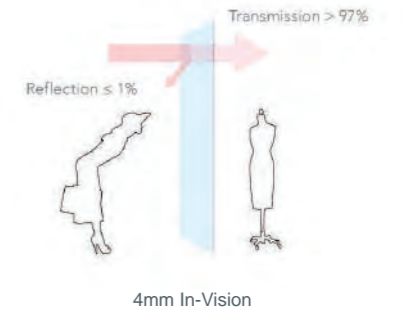
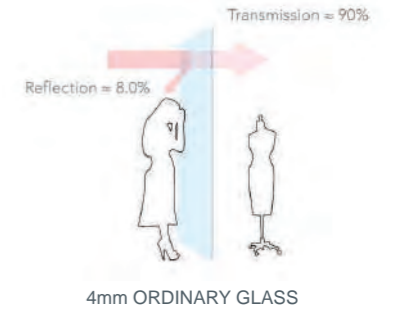
# Diamond Guard



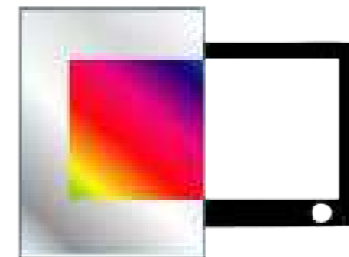
Diamond Guard is brilliant in the face of wear and tear, because of its structure is fused with diamond-like carbon. It is good for glass cases and shelving systems. A desk top which make a statement about your business or workplace, and should accentuate with brilliance and clarity.



IN-VISION



- Low reflectivity, high light transmittance
- Very high colour rendering index
- Pleasing light blue appearance in remaining reflection
- No colour variation in changed viewing angle
- Annealed and heat treatable
- With TPF (Temporary Protection Foil)



# Mirror Vision

- Sharp reflected colors without haze -- Highest neutrality of transmitted display colors -
- No color shift in various viewing angle -
- Very low (<2%) absorption -
- with 2 type of mirror selection -

\* Mirror Vision 60- For "hidden" TV/Display application with 60% of light reflection and 40% transmission

\* Mirror Vision 30- For framed TV application with 30% of light reflection and 70% transmission



# Anti Slippery

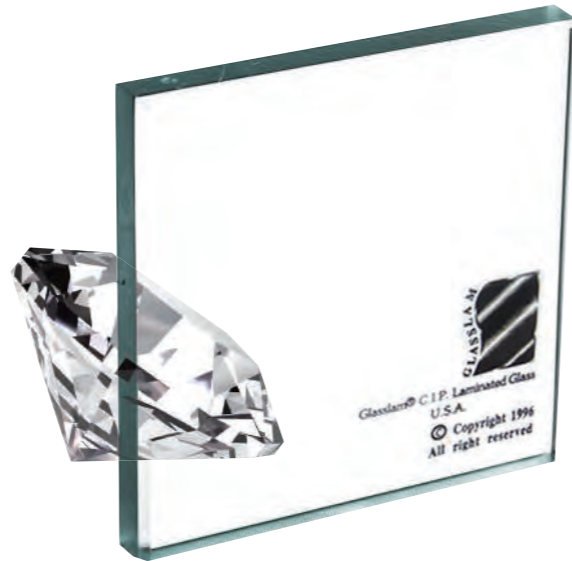
## ANTI SLIPPERY

Our Glasslam C.I.P. Laminated Glass was passed the Anti-slippery coating test, this act is represent our glass can using in the floor, it is a breakthrough in our floor glass product, this test is proof that our glass is safety and reliable, this purpose also is our motive force, to manufacture the best product to the market.

# SCHOTT AMIRAN

Imported from Germany, SCHOTT AMIRAN anti-reflective glass adopts a special dipping process to coat the glass with layers of metal oxides, which create a crystal clear effect and ease the cleaning problems. The high transmission resulted from the technology reduce irritating reflections and allows good view of dimly lit items.

It is widely used in showcase of retail and museum, and outdoor applications like facade and glazing.



# ULTRA CLEAR SATIN

Ultra Clear Satin is a semi-transparent glass with satin finish. Unlike traditional satin glass, the translucency and light transmittance of Ultra Clear Satin is maintained at a high level. Fingerprints and dirt can be avoided with due to its smooth surface, hence reducing the needs of frequent cleaning.



## COMPLIES WITH

DIN EN ISO 12543-6

Glass in building - Laminated glass and laminated safety glass

# Contact details

## IINNO Ltd

2101A Nan Fung Centre,  
264-298 Castle Peak Road,  
Tsuen Wan, Hong Kong

Tel: 0086 (0)769 23010151 / 2  
Email: [sales@iinno-group.com](mailto:sales@iinno-group.com)  
[www.iinno-group.com](http://www.iinno-group.com)



