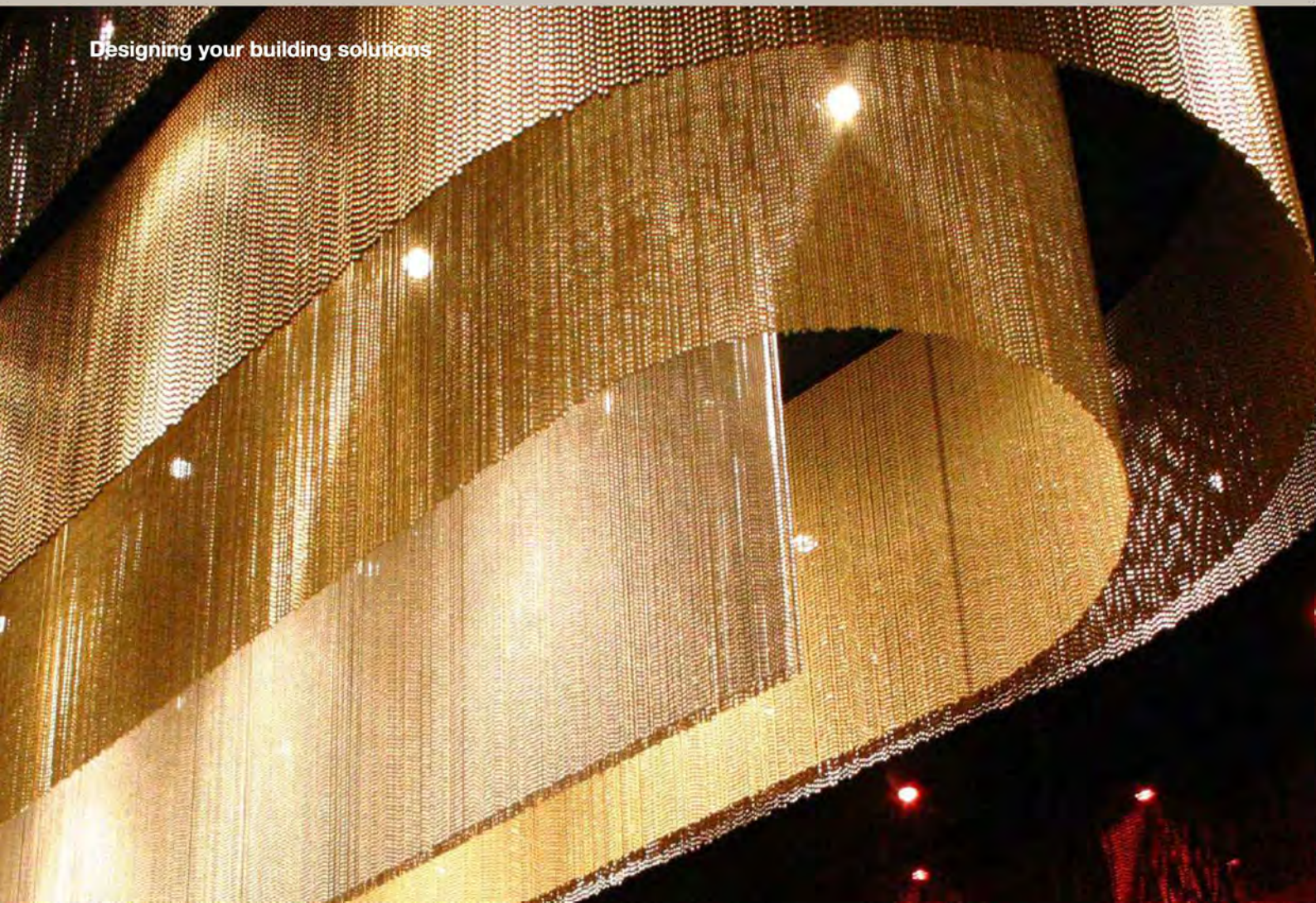




Decorative metal mesh solutions I

Designing your building solutions





CONTENTS

Metal coil Drapery	03
Chain Link Curtain	07
Ring Mesh	13
Decorative Conveyor Belt	16
Architectural Woven Metal Mesh	20
Woven Wire Drapery	28
Woven Metal Interiors	33
Laminated Glass Metal Mesh	39
Decorative Perforated Metal Mesh	45
Decorative Expanded Metal Mesh	50



01

Metal Coil Drapery

Metal coil drapery is a type of modern decorative mesh curtain.

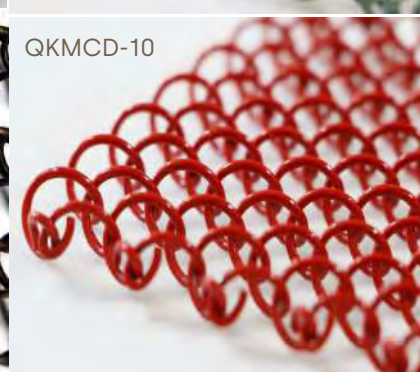
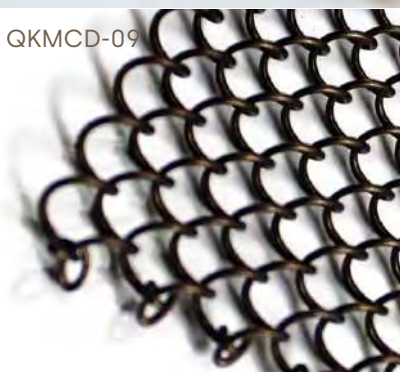
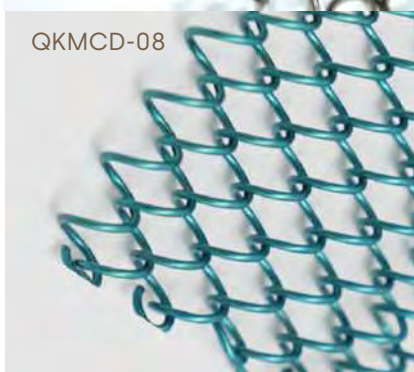
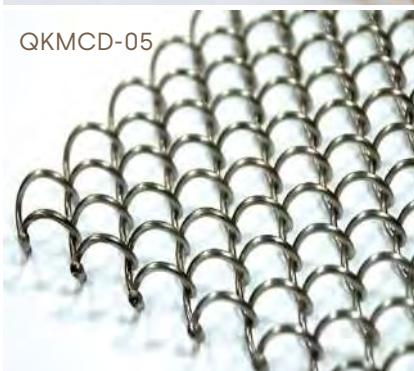
The advantage of Metal coil drapery is it could slid on the channel as a whole piece, and the cost performance is more suitable for customers, compared with chain link curtain, and other decorative mesh.

The chain on the surface of the curtain can secure the rippled effect.

Various of color

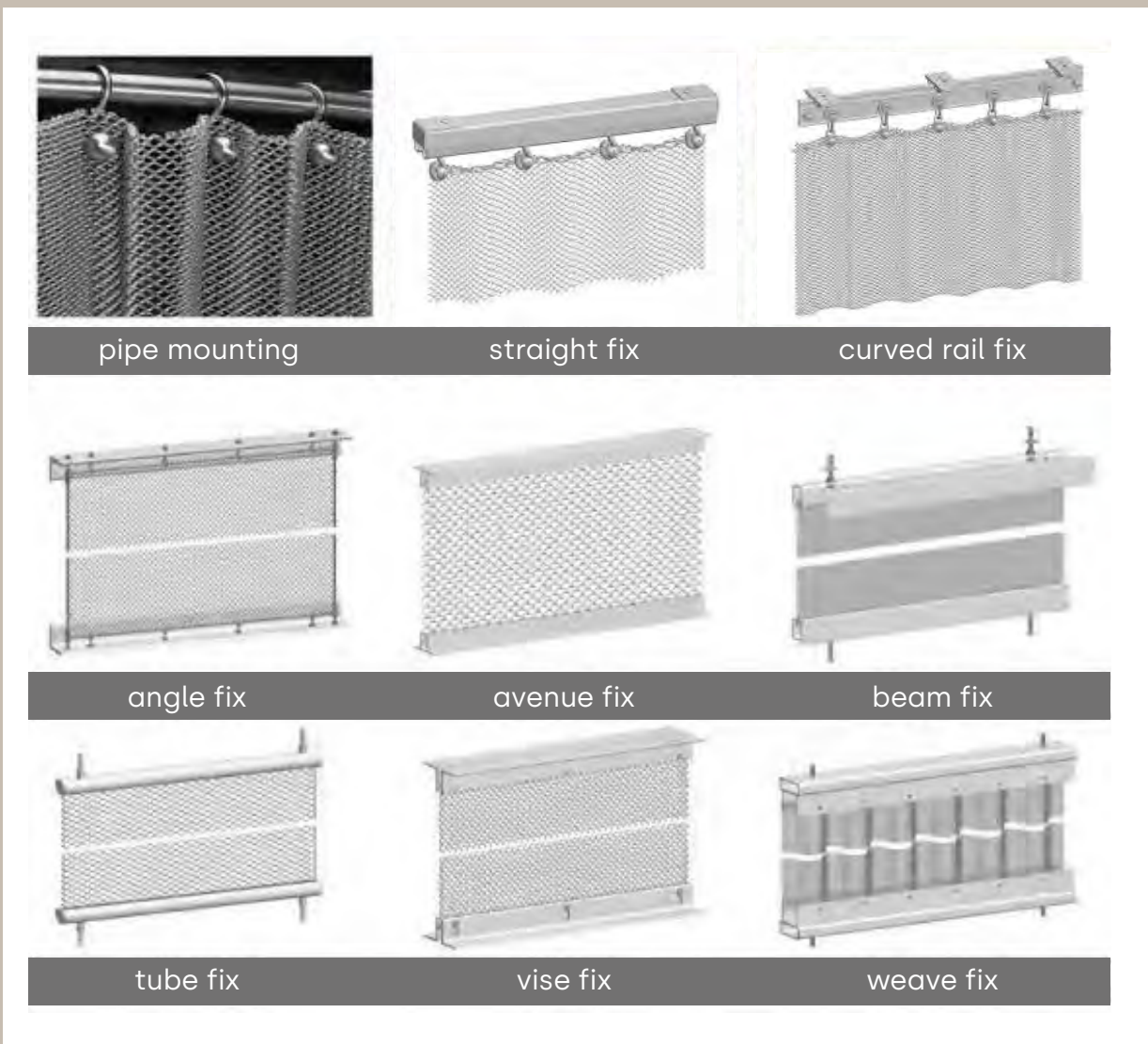
Original metallic color, or spray chart into bronze, gold, ebony black, purplish red, etc, customized color is available.

1-10 VARIOUS



Fix instruction

Metal coil drapery is made from stainless steel or aluminum wires. When used as decoration, metal coil drapery looks like a whole piece, which differs from the strip-type chain link curtain.



NOTICE:

If customers would like to make weave for curtain fixing, the overall length of the product is 1.5-2times for the run length.

Due to the luxurious and practical feature

Metal coil drapery has been chosen as today's decoration style by much more designers.

It is applied broadly in _____

Exhibition

Hotels

Restaurants

Lobby

Living

Bathroom





02

Chain Link Curtain

Chain Link Curtain is also called chain fly screen. It is made of 100% aluminum materials and has excellent quality.

Nowadays

Chain link curtains have become a popular decoration option for modern people, and compared with other types like ring mesh curtain and metal coil drapery chain link curtain is relatively economic.

The aluminum chain curtain has the advantages of lightweight, simple structure and convenient installation.



Color Chart

Chain link curtain is made from aluminum material and with various colors covering.

- 1 Popular colors for Chain Link Curtain in above color chart for your choices.
- 2 Each color could be did gloss color vision and matte color vision.
- 3 Customized color is also acceptable.

GLOSS / MATTE



BLACK



FLORIDA PINK



NICKEL



SILVER



PALE PINK



BLACK



FLORIDA PINK



NICKEL

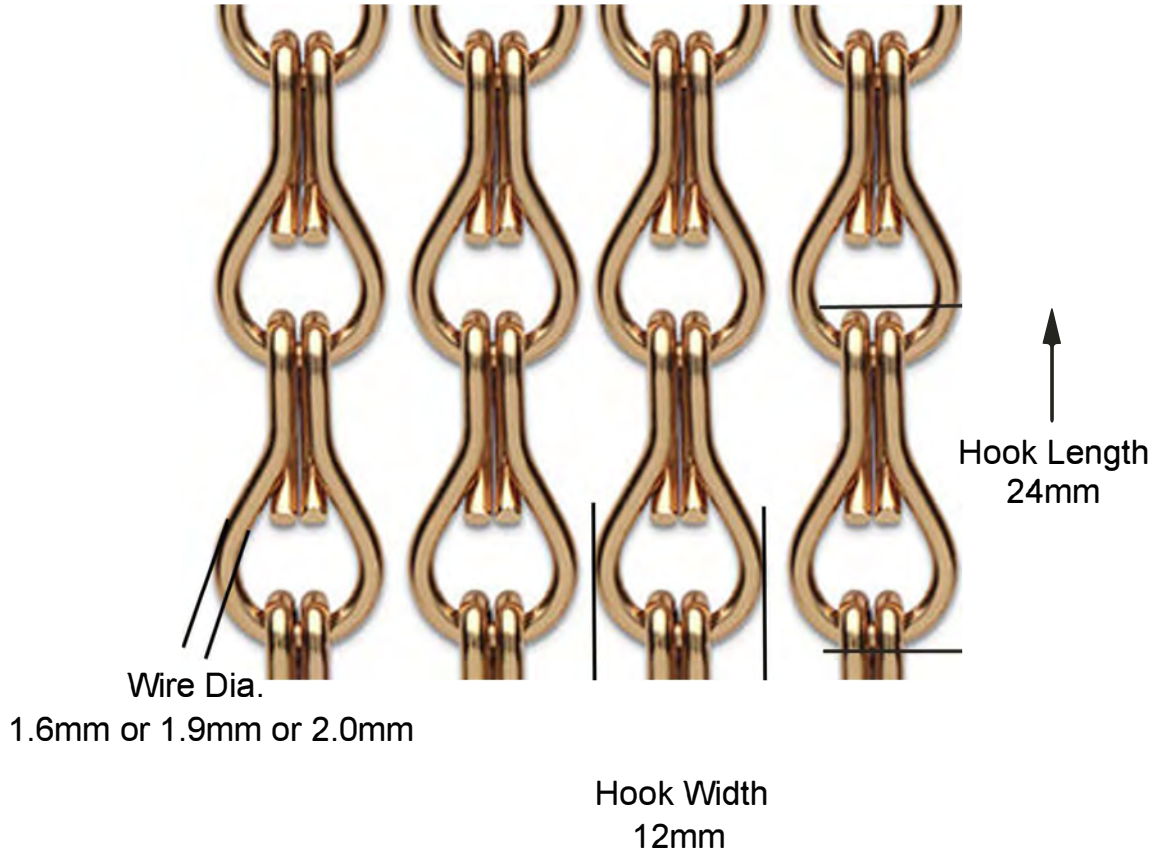


SILVER



PALE PINK





Wire Dia.
1.6mm or 1.9mm or 2.0mm

Hook Width
12mm

Hook Length
24mm

Material:	Aluminum
Surface Treatment:	Anodizing
Wire diameter:	1.6mm - 2.0mm (1.6mm , 1.9mm most popular , 2.0mm)
Hook Length:	24mm
Hook width:	12mm
Color:	Brilliant / Satin



QKCLC-01
Rose Gold



QKCLC-02
Red



QKCLC-03
Gold



QKCLC-04
Purple



QKCLC-05
Turquoise



QKCLC-06
Orange



QKCLC-07
Copper



QKCLC-08
Sand



QKCLC-09
Lime



QKCLC-10
Brown



QKCLC-11
Black



QKCLC-12
Pale pink



QKCLC-13
Silver



QKCLC-14
Nickel



QKCLC-15
Florida pink



QKCLC-16
Bourdeaux



QKCLC-17
Emerald



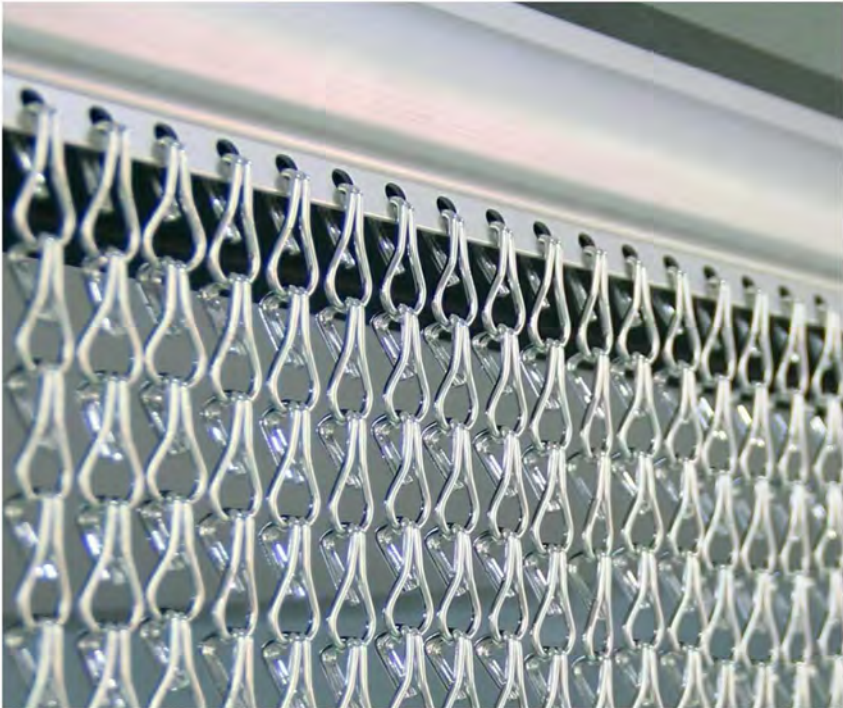
QKCLC-18
Green

1. Straight track installations

Straight track with wall accessories

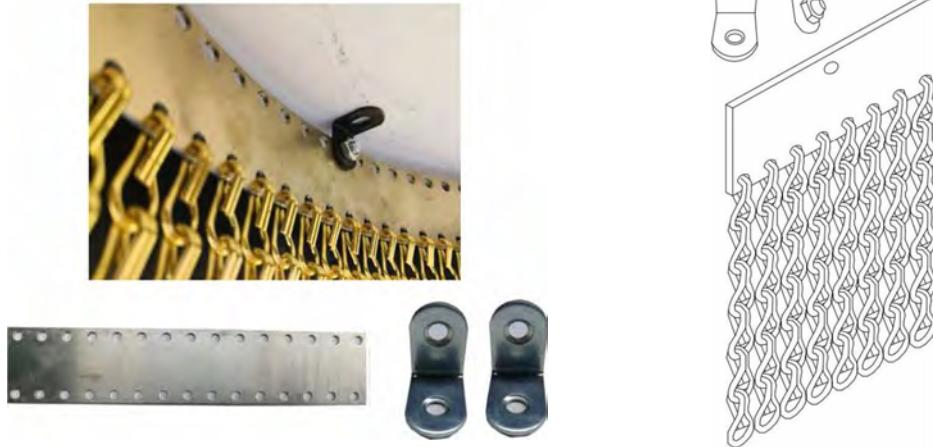


Straight track with ceiling accessories



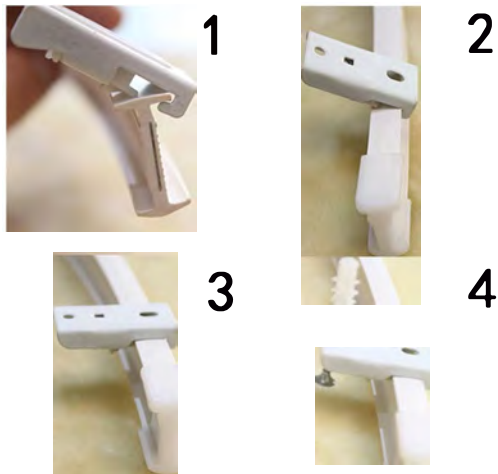
2. Curved track installations

1) Curved pattern 1 - with ceiling accessories

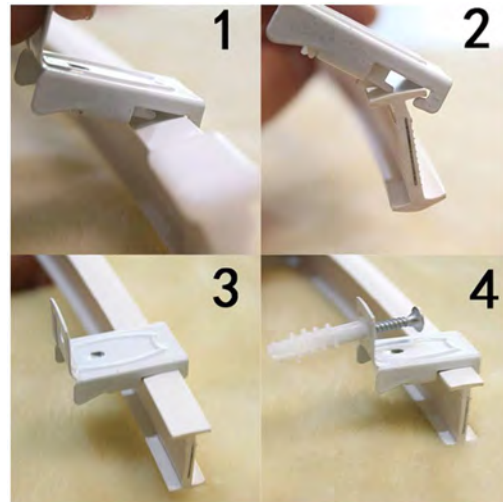


2) Curved pattern 2 - with ceiling & wall accessories

Curved track with ceiling accessories



Curved track with wall accessories





ORANGE BROWN LIME SAND COPPER GREY COFFEE BLUE APRICOT AMETHYST



ROSE GOLD RED GOLD TURQUOISE PURPLE BOURDEAUX COBALT MOSS GREEN EMERALD

The overall vision of the us was to create technologically sophisticated and vibrant spaces, communicating a sense of fun, warmth and welcome to its guests.

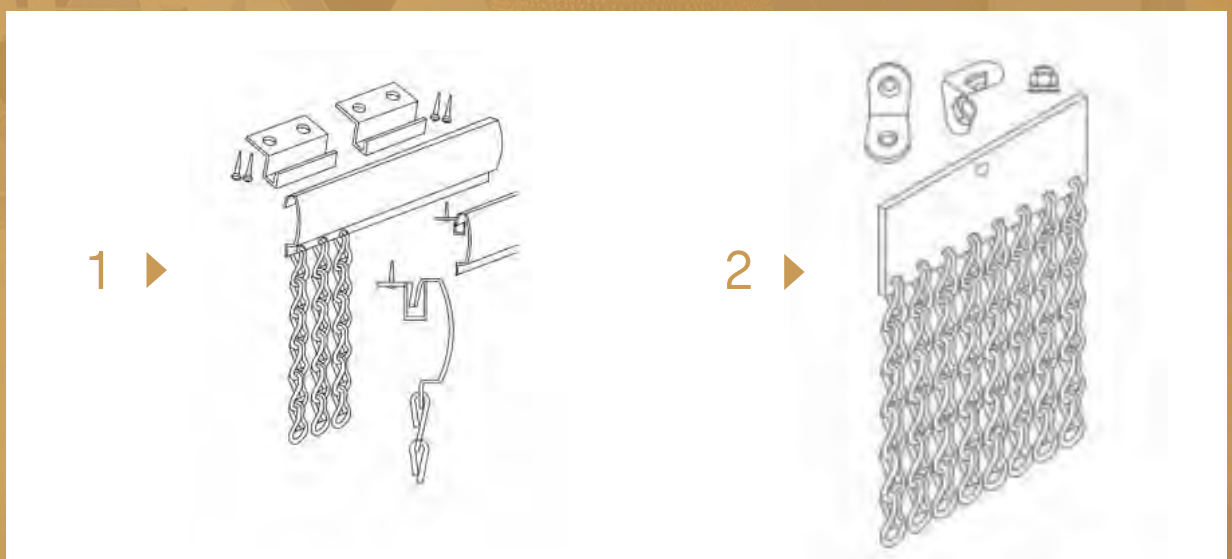
Installation Type

1 STRAIGHT TRACK INSTALLATION

Straight track is a straight one which have uniform holes. It is the most common and economical type track. Straight track suitable for the straight designed chain link curtains which will installed on the wall or ceiling with simple accessories and don't need slid to open and close. It is firm and durable.

2 CURVED TRACK INSTALLATION

Curved track has cambered shape which can adapt to cambered installation conditions. Like the straight track, it can not be slid to open and closed, too. It can satisfy the applications of hotels or restaurant for space divider, office buildings to design a cambered space and other cambered shapes partition design.





Application Scenarios

It's easy to install and has unique appearance, applied to various occasions, purposes, highlighting the elegant temperament, extraordinary personality and noble taste.



03

Ring Mesh



Type specification

Ring mesh also named chainmail mesh. It is another new decorative materials at modern architectural design territory . it is make of carbon steel wire or stainless steel wire with various color and shows a imaginary and elegant atmosphere. Metal ring mesh is widely used in the architectural constructions, such as space divider, window curtain, wall decoration, facade cladding.



Wire diameter: 0.53mm
Ring diameter: 3.8mm Weight: 3.2kg/
m²



Wire diameter: 1.0mm
Ring diameter: 8.0mm Weight: 4kg/
m²



Wire diameter: 1.2mm
Ring diameter: 12.0mm Weight: 4.8kg/
m²



Wire diameter: 2.0mm
Ring diameter: 20.0mm Weight: 6.8kg/
m²

Application Scenarios

Fit all of your interior design
and architectural needs



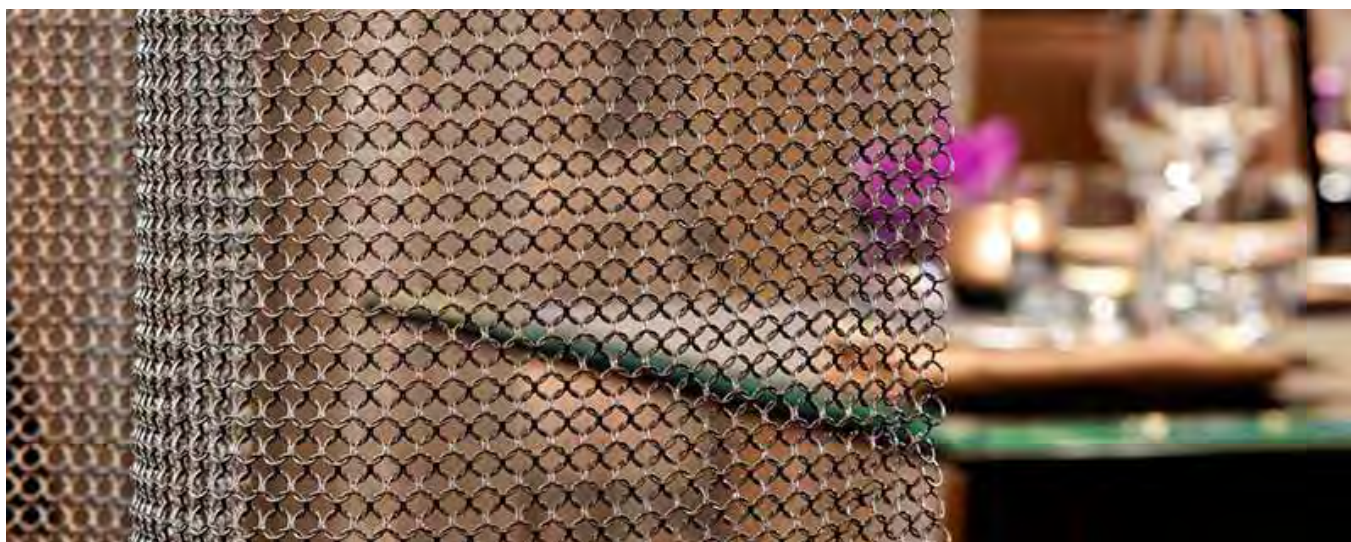
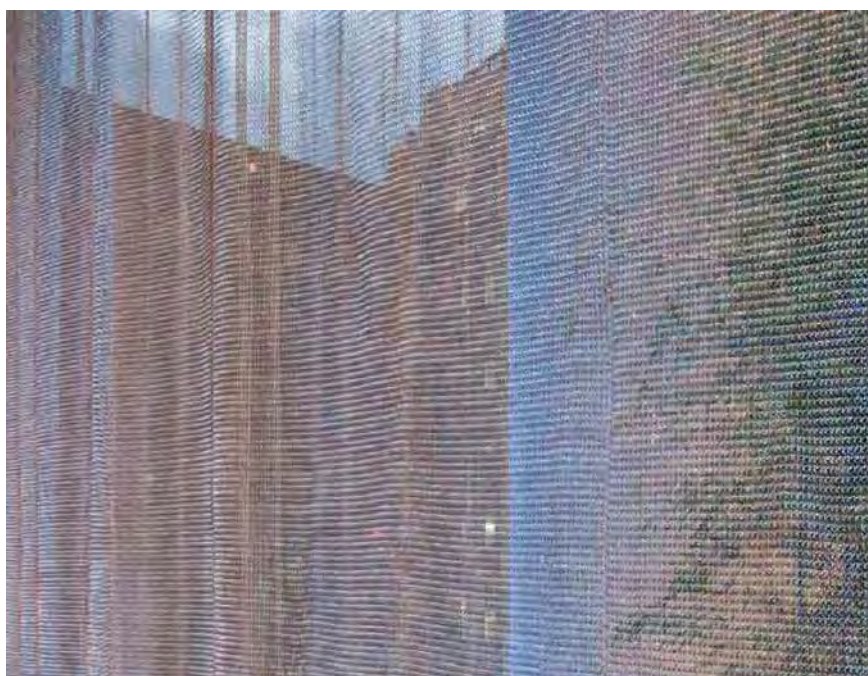
type 1



type 2



type 3



A close-up photograph of a decorative conveyor belt. The belt is made of a metal mesh with a complex, repeating spiral or wave-like pattern. The mesh is dark, possibly black or dark grey, and is set against a lighter, blurred background. The lighting creates highlights and shadows that emphasize the three-dimensional texture of the mesh. The overall composition is abstract and focuses on the intricate details of the material.

04

Decorative Conveyor Belt

Decorative conveyor belt also called spiral weave mesh, is a type of decorative metal fabric. Because of the beautiful pattern, exquisite workmanship and other characteristics, it has been gradually accepted and approved by designers in architecture system.

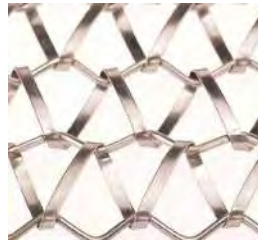
Type specification

QKDCB-01



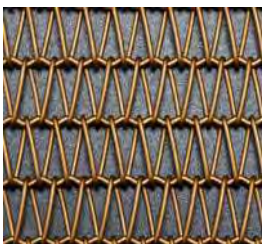
Spiral Diameter: 1x2.5mm
 SpiralPitch: 14.5mm
 Cross Rod 2mm
 Diameter: Cross 25.5mm
 Rod Pitch: Weight: 5kg/m²
 Opening Area: 73%

QKDCB-02



Spiral Diameter: 1x7.2mm
 Spiral Pitch: 38mm
 Cross Rod Diameter: 3mm
 Cross Rod Pitch: 30mm
 Weight: 5.3kg/m²
 Opening Area: 80%

QKDCB-03



Spiral Diameter: 1.2mm
 SpiralPitch: 8mm
 Cross Rod 1.3mm
 Diameter: Cross 13mm
 Rod Pitch: Weight: 3.5kg/m²
 Opening Area: 63%

QKDCB-04



Spiral Diameter: 2x4mm
 SpiralPitch: 20mm
 Cross Rod 3.5mm
 Diameter: Cross 40mm
 Rod Pitch: Weight: 9.48kg/m²
 Opening Area: 55%

QKDCB-05



Wire Diameter: 1.6mm
 Warp Pitch: 7mm
 Weft Pitch: 120mm
 Weight: 2.5kg/m²
 Opening Area: 76%

QKDCB-06



Wire Diameter: 2.35mm
 Warp Pitch: 12.7mm
 Weft Pitch: 100mm
 Weight: 3.4kg/m²
 Opening Area: 80%

QKDCB-07



Wire Diameter: 1.6mm
 Spiral Coil Quantity: 69
 Opening Area: 82%

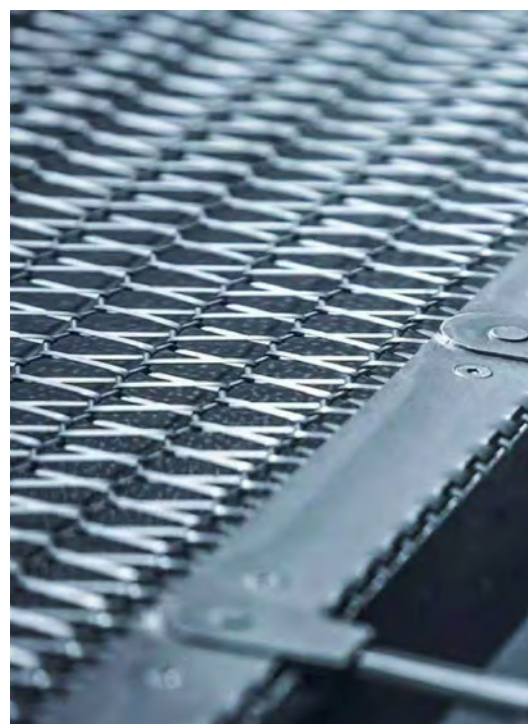
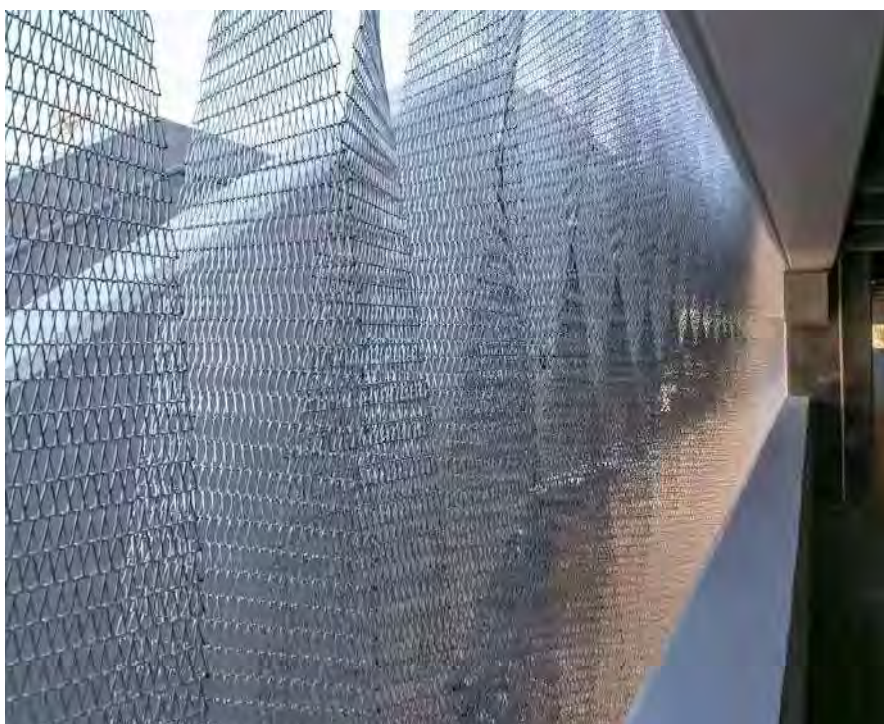
QKDCB-08



Spiral Diameter: 2.03mm
 Spiral Pitch: 1.29mm
 Cross Rod 2.03mm
 Diameter: Cross 4.35mm
 Rod Pitch: Number
 Of Cross Rod Per 4
 Spiral: Opening 0%
 Area:



A variety of conveyor belt types provide designers with a variety of design choices, better service for design, in order to achieve the most perfect interior and exterior decorative effect.



Decorative conveyor belt is widely used in

Architectural decoration, such as room dividers, guardrail, ceiling decoration, wall decoration, door curtain, shop exhibition stands, building facade.



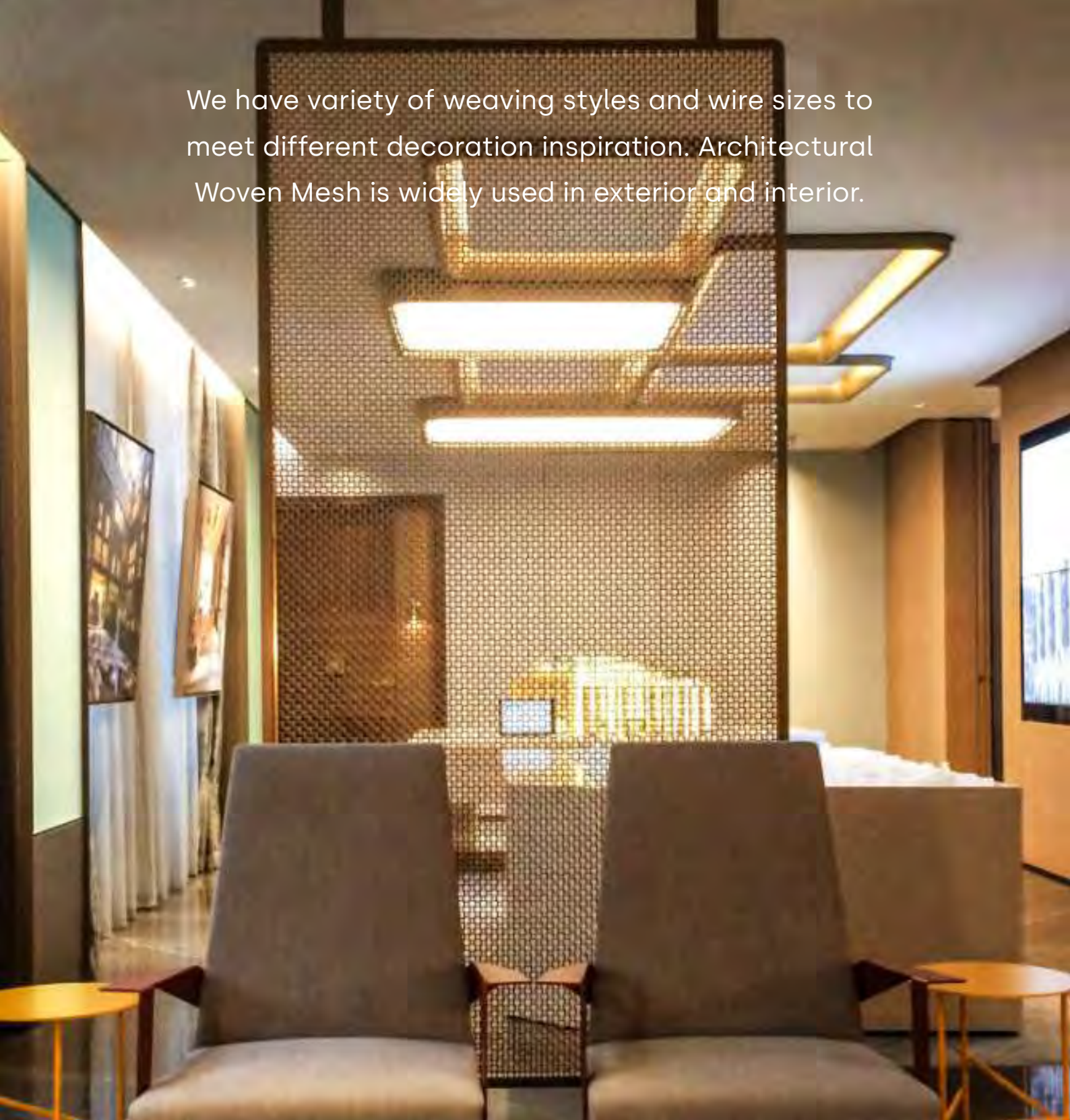


05

Architectural Woven Metal Mesh

Architectural Woven Mesh is also called Decorative crimped woven mesh, it is made from stainless steel mostly, aluminum, cooper, brass material is also available to design this product.

We have variety of weaving styles and wire sizes to meet different decoration inspiration. Architectural Woven Mesh is widely used in exterior and interior.



SUCH AS

Curtains,ceilings,stairs,elevators,
luxury office buildings, hotels, lobby,
luxury ballrooms,business halls and
other buildings.

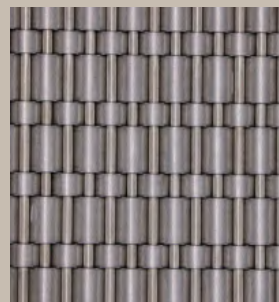


It not only has superior feature than the original architecture elements, but also has nice appearance which will catch our eyes easily, it becomes more and more popular among designers for construction decoration.

PRODUCT SPECIFICATION



QKCWM-01
Warp Diameter:1.5mm
Weft Diameter:2mm
Warp Pitch:4mm
Weft Pitch:17.5mm
Weight:2.5kg/m²
Opening Area:45.7%



QKCWM-02
Warp Diameter:3mm
Weft Diameter:
6.2x1mm,3.1x1mm
Warp Pitch:6.5mm
Weft Pitch:9.3mm
Weight:22.7kg/m²
Opening Area:0%



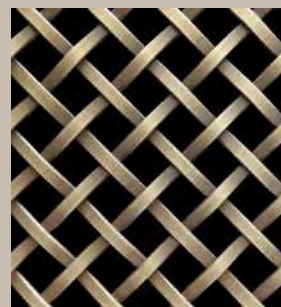
QKCWM-03
Warp Diameter:1.5mm
Weft Diameter:2mm
Warp Pitch:5mm
Weft Pitch:3mm
Weight:11.4kg/m²
Opening Area:0%



QKCWM-04
Warp Diameter:1.2x5mm
Weft Diameter:1.2x5mm
Warp Pitch:12.7mm
Weft Pitch:12.7mm
Weight:7.8kg/m²
Opening Area:36.75%



QKCWM-05
Warp Diameter:1mm
Weft Diameter:1x4mm
Warp Pitch:20mm
Weft Pitch:8mm
Weight:5.3kg/m²
Opening Area:36.4%



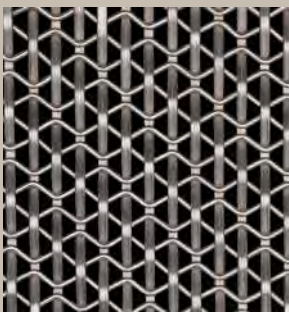
QKCWM-06
Warp Diameter:1.5x3.5mm
Weft Diameter:1.5x3.5mm
Warp Pitch:10mm
Weft Pitch:10mm
Weight:8.6kg/m²
Opening Area:42.2%



QKCWM-07
 Warp Diameter:0.75x2mm
 Weft Diameter:0.75x2mm
 Warp Pitch:15mm
 Weft Pitch:15mm
 Weight:6.5kg/m²
 Opening Area:9.2%



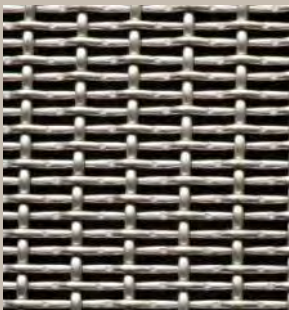
QKCWM-08
 Warp Diameter:1.1x3.4mm
 Weft Diameter:1.1x3.4mm
 Warp Pitch:6.6mm
 Weft Pitch:6.6mm
 Weight:11.55kg/m²
 Opening Area:24%



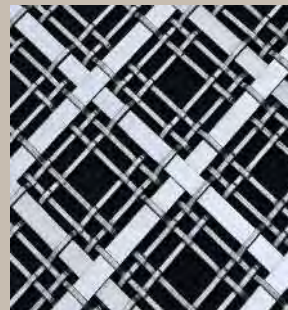
QKCWM-09
 Warp Diameter:1.2X2mm
 Weft Diameter:2mm
 Warp Pitch:5mm
 Weft Pitch:5mm
 Weight:8.74kg/m²
 Opening Area:31%



QKCWM-10
 Warp Diameter:1.5mm
 Weft Diameter:2mm
 Warp Pitch:4mm
 Weft Pitch:17.5mm
 Weight:2.5kg/m²
 Opening Area:45.7%



QKCWM-11
 Warp Diameter:2mm
 Weft Diameter:1.8mm
 Warp Pitch:9mm
 Weft Pitch:4mm
 Weight:7.96kg/m²
 Opening Area:44%



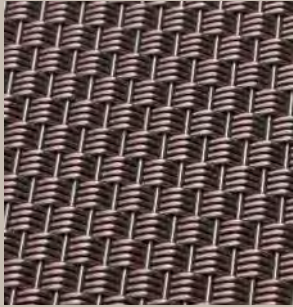
QKCWM-12
 Warp Diameter:
 1.4X3mm,1.0X10mm
 Weft Diameter:
 1.4X3mm,1.0X10mm
 Warp Pitch:63mm
 Weft Pitch:63mm
 Weight:7.8kg/m²
 Opening Area:45.9%



QKCWM-13
 Warp Diameter:2.5mm
 Weft Diameter:2.5mm
 Warp Pitch:8.5mm
 Weft Pitch:8.5mm
 Weight:9.38kg/m²
 Opening Area:42.2%



QKCWM-14
 Warp Diameter:1.2x3.5mm
 Weft Diameter:1.2x3.5mm
 Warp Pitch:42mm
 Weft Pitch:42mm
 Weight:4.8kg/m²
 Opening Area:58.7%



QKCWM-15
 Warp
 Diameter:1.5mm
 Weft Diameter:2mm
 Warp Pitch:7mm
 Weft Pitch:8mm
 Weight:14.74kg/m²
 Opening Area:0%



QKCWM-16
 Warp Diameter:0.8mm
 Weft Diameter:1.5mm
 Warp Pitch:2.88mm
 Weft Pitch:7.25mm
 Weight:4.1kg/m²
 Opening Area:53.9%



QKCWM-17
 Warp Diameter:1.6mm
 Weft Diameter:1.7x4mm
 Warp Pitch:4.5mm
 Weft Pitch:4mm
 Weight:15.2kg/m²
 Opening Area:0%



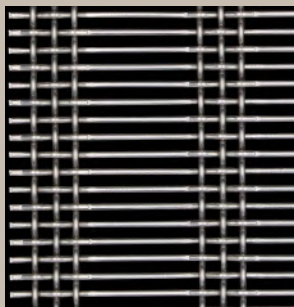
QKCWM-19
 Warp Diameter:1x10mm
 Weft Diameter:1x10mm
 Warp Pitch:13mm
 Weft Pitch:13mm
 Weight:12.5kg/m²
 Opening Area:5.3%



QKCWM-20
 Warp Diameter:2mm
 Weft Diameter:2mm
 Warp Pitch:12.7mm
 Weft Pitch:12.7mm
 Weight:4kg/m²
 Opening Area:58.3%



QKCWM-21
 Warp Diameter:0.6x1.75mm
 Weft Diameter:0.6x1.75mm
 Warp Pitch:5mm
 Weft Pitch:5mm
 Weight:3.36kg/m²
 Opening Area:41%



QKCWM-23
 Warp Diameter:2.5mmx3
 Weft Diameter:3mm
 Warp Pitch:90.5mm
 Weft Pitch:12mm
 Weight:6.08kg/m²
 Opening Area:68.8%



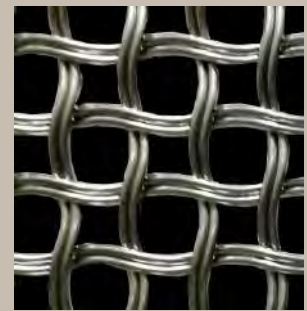
QKCWM-24
 Warp Diameter:2mm
 Weft Diameter:2x3mm
 Warp Pitch:8mm
 Weft Pitch:3mm
 Weight:20.5kg/m²
 Opening Area:0%



QKCWM-22
 Warp Diameter:2mm
 Weft Diameter:1.5mm
 Warp Pitch:17.5mm
 Weft Pitch:1.55mm
 Weight:11.67kg/m²
 Opening Area:0%



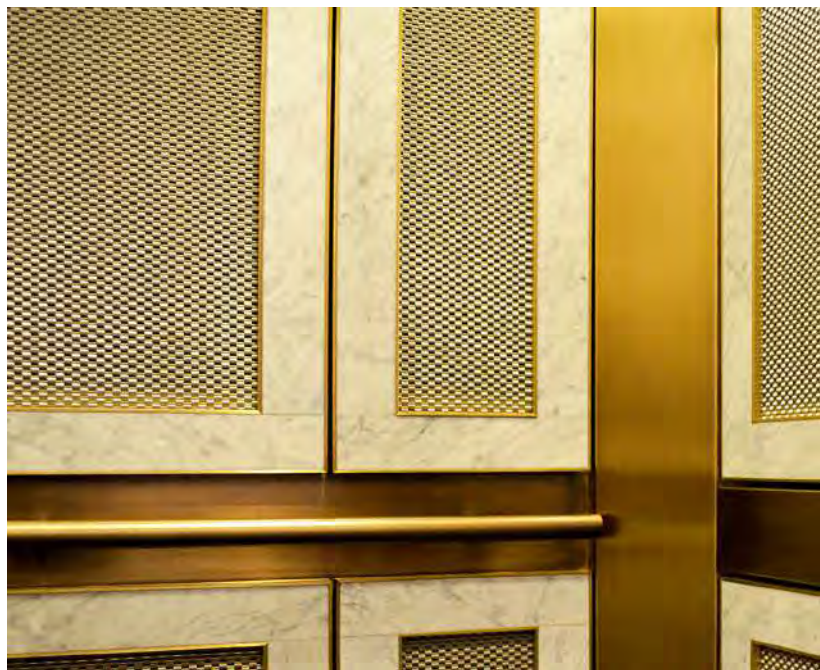
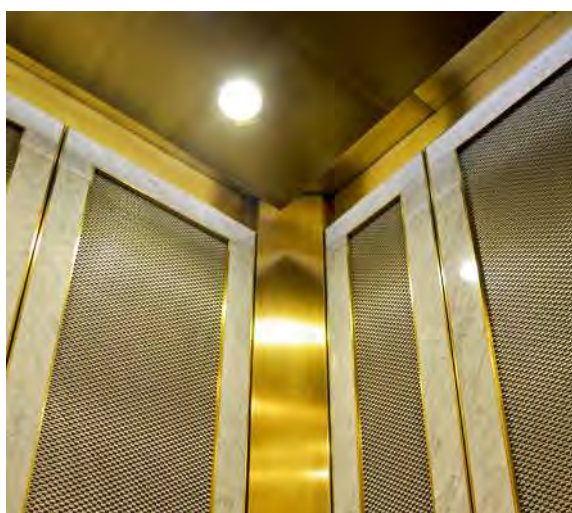
QKCWM-25
 Warp Diameter:3.0x1.5mm
 Weft Diameter:4.0x1.7mm
 Warp Pitch:40mm
 Weft Pitch:38mm
 Weight:4.4kg/m²
 Opening Area:56%



QKCWM-26
 Warp Diameter:2.5mmx2
 Weft Diameter:2.5mmx2
 Warp Pitch:16mm
 Weft Pitch:16mm
 Weight:10kg/m²
 Opening Area:52%

Architectural Woven Mesh For Elevator Interior

Tiny mesh opening





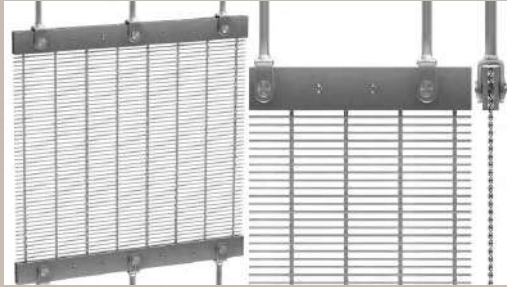
06

Woven Wire Drapery

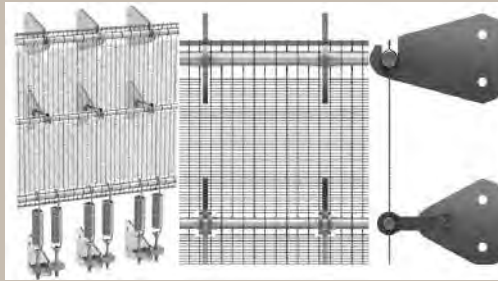
It is mostly made of non-corrosive stainless steel rope and wire.

Different Installation Ways

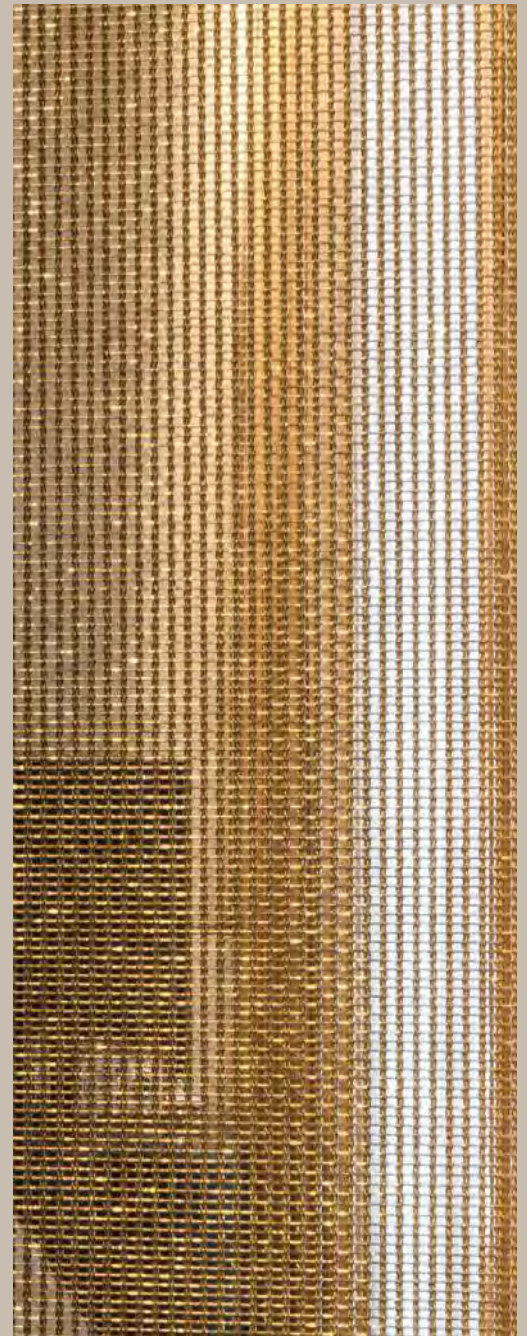
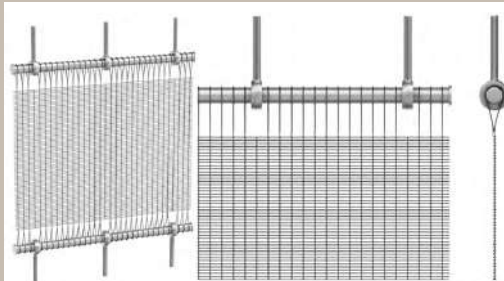
1



2



3



For Architectural, it is a kind of decorative metal meshes. It is competent for interior and exterior ornamentation. For interior, it can be used as room dividers, decorative curtains and ceiling curtains.

PRODUCT SPECIFICATION



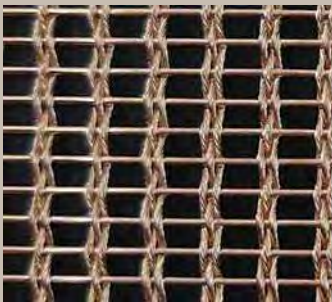
QKWWD-01

Cable Diameter:0.45mmx3
Rod Diameter:0.5mm
Cable Pitch:3.5mm
Rod Pitch:1.6mm
Weight:2.1kg/m² Opening Area:42%



QKWWD-06

Cable Diameter:2mmx3
Rod Diameter:3mm
Cable Pitch:80mm Rod Pitch:10mm
Weight:6.67kg/m² Opening Area:65%



QKWWD-02

Cable Diameter:0.45mmx3
Rod Diameter:0.5mm
Cable Pitch:3.5mm
Rod Pitch:1.6mm
Weight:2.3kg/m² Opening Area:42%



QKWWD-03

Cable Diameter:0.75mmx4
Rod Diameter:1.5mm
Cable Pitch:26.4mm
Rod Pitch:3mm
Weight:5.3kg/m² Opening Area:44%



QKWWD-04

Cable Diameter:1mmx4
Rod Diameter:2mm Cable Pitch:36mm
Rod Pitch:4mm
Weight:7kg/m² Opening Area:44%

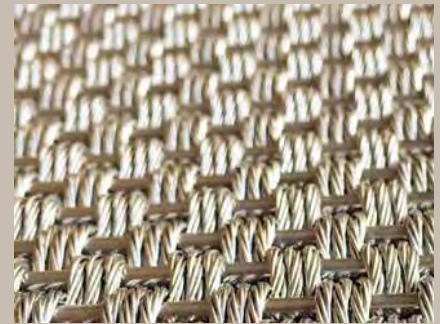
QKWWD-07

Cable Diameter:2.75mmx2
Rod Diameter:4mm Cable Pitch:40mm
Rod Pitch:14.5mm
Weight:9.41kg/m² Opening Area:62%



QKWWD-09

Cable Diameter:2.5mmx1
Rod Diameter:2mm
Cable Pitch:7mm
Rod Pitch:7mm
Weight:6.45kg/m2
Opening Area:45.9%



QKWWD-08

Cable Diameter:1.5mmx3
Rod Diameter:2.5mm
Cable Pitch:5mm
Rod Pitch:7.5mm
Weight:8.15kg/m2
Opening Area:0%



QKWWD-10

Cable Diameter:2mmx3
Rod Diameter:3mm
Cable Pitch:80mm
Rod Pitch:10mm
Weight:6.67kg/m2
Opening Area:65%



QKWWD-11

Cable Diameter:2.5mmx1
Rod Diameter:2mm
Cable Pitch:6mm
Rod Pitch:8mm
Weight:9.8kg/m2
Opening Area:44%



QKWWD-12

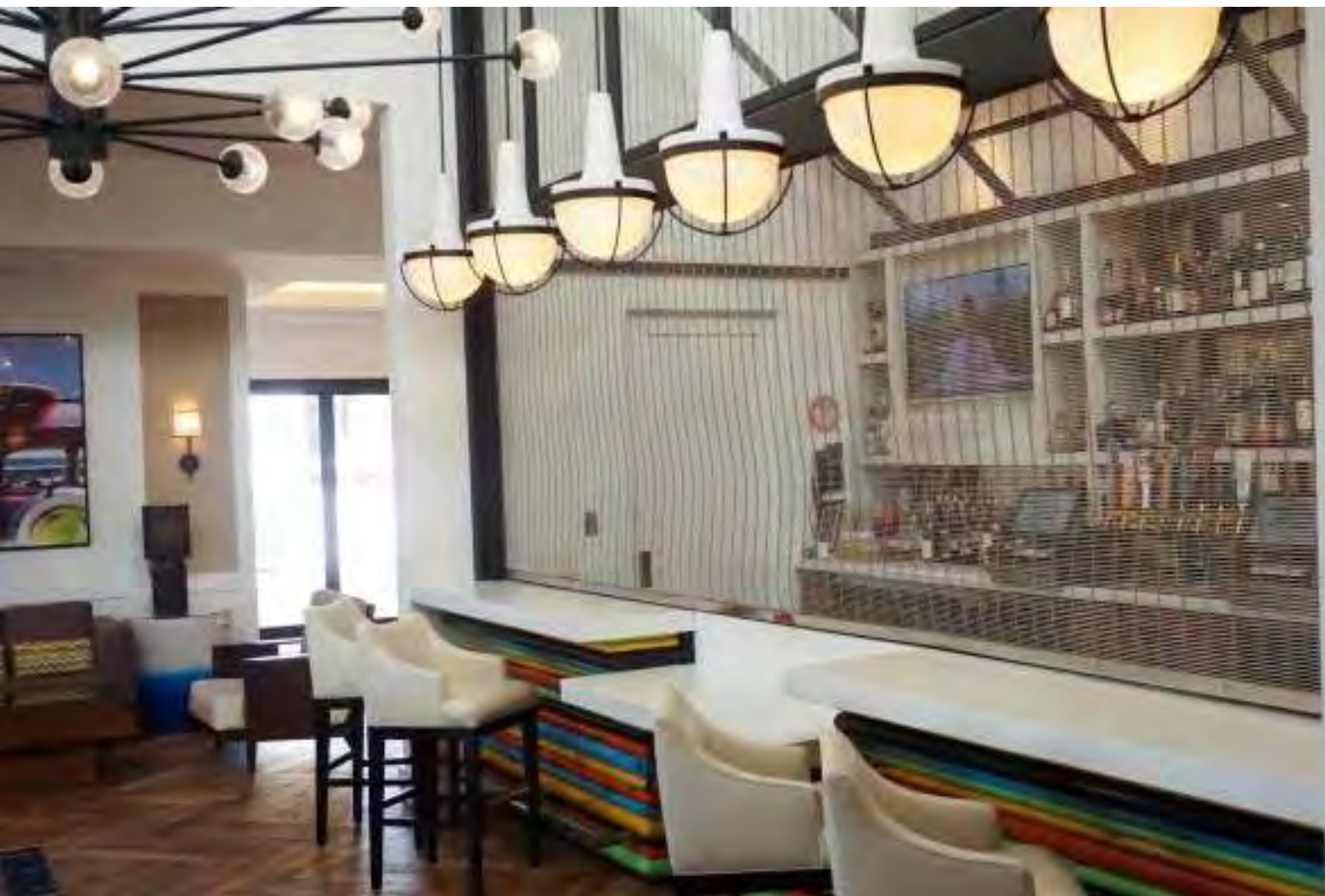
Cable Diameter:2mmx1
Rod Diameter:1.5mm
Cable Pitch:17.5mm
Rod Pitch:3.5mm
Weight:5.53kg/m2
Opening Area:51%

QKWWD-05

Cable Diameter:2mmx4
Rod Diameter:3mm
Cable Pitch:50mm
Rod Pitch:6mm
Weight:11.56kg/m2
Opening Area:42%

Application Scenarios

For exterior, it is an ideal option for building facade, column cladding, and wall coverings. It is also a good choice of protective application for stairs, elevator cabs, rails and balustrades.

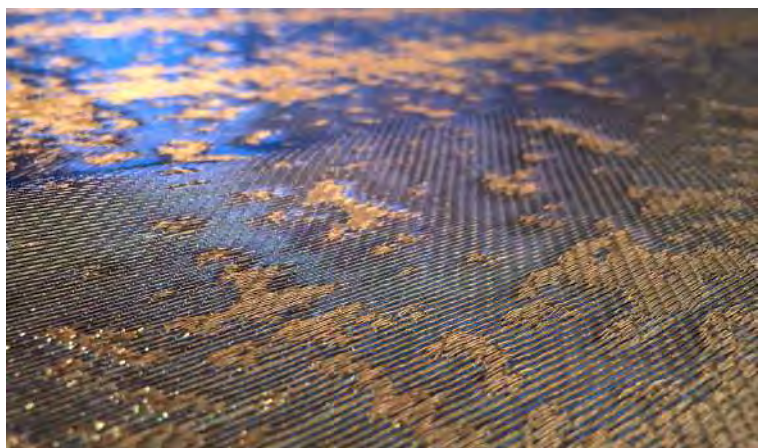




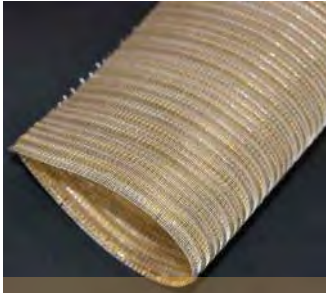
Woven Metal Interiors

Woven metal interiors is metal textile fabric made from soft fine wire, generally, it is stick with fabric at back and is applied as wall covering, window treatments and glass lamination with hundreds of different styles and colors for customers option.

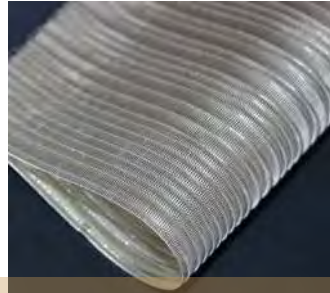
Bespoke gradients, specially mixed colors,
and carefully crafted metal weaves.



PRODUCT SPECIFICATION



QKDB-20



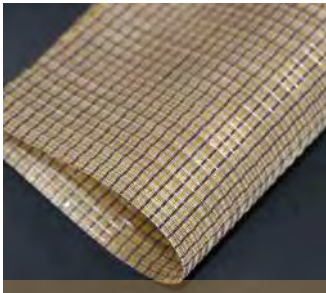
QKDB-23



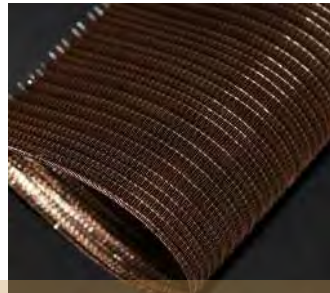
QKDB-26



QKDB-28



QKDB-33



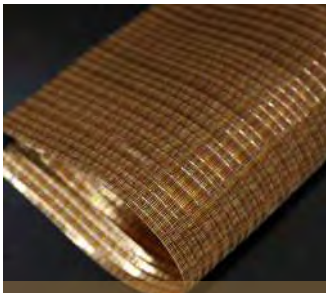
QKDB-36



QKDB-38



QKDB-43



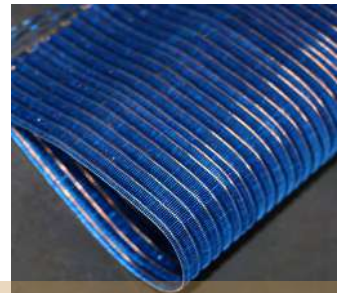
QKDB-44



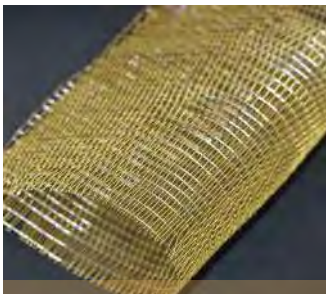
QKDB-46



QKDB-313



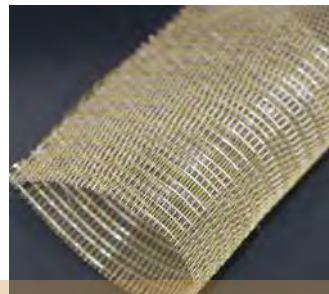
QKDBX2-01



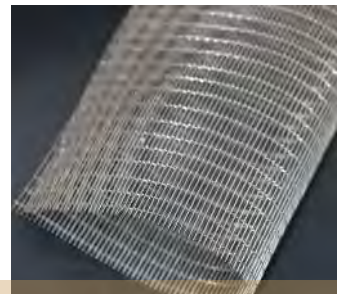
QKDBX-07



QKDBX2-08



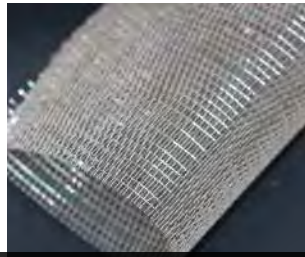
QKDBX-09



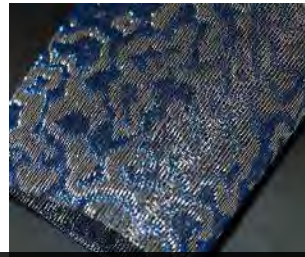
QKDBX-11Y



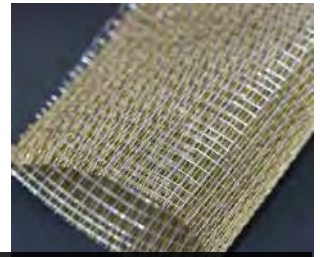
QKDBX-15



QKDBX-21



QKDBX-27



QKDBX-28



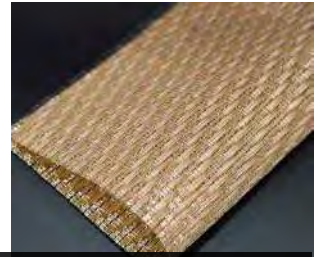
QKDBX-28A



QKDB-29



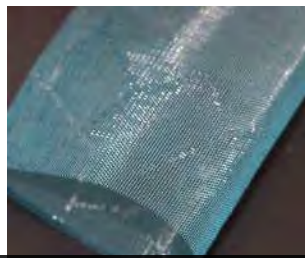
QKTH-01



QKTH-02



QKTH2-01



QKTH2-03A



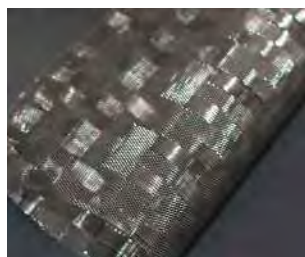
QKTH2-05



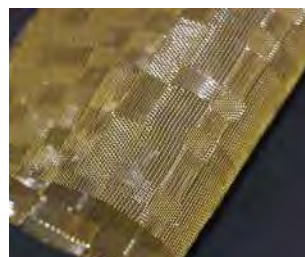
QKTH2-14



QKTH2-15



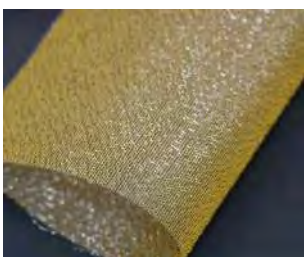
QKTH2-16



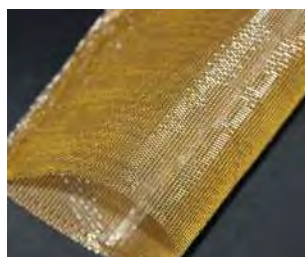
QKTH2-16A



QKTH2-17C



QKTH2-19A



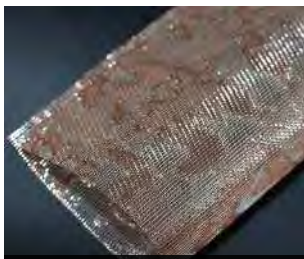
QKTH2-20



QKTH2-21



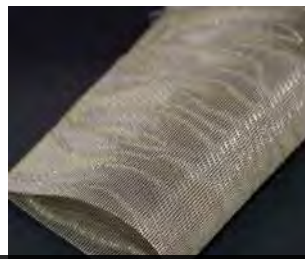
QKTH2-22



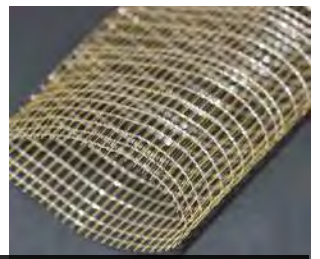
QKTH2-23



QKTH2-25



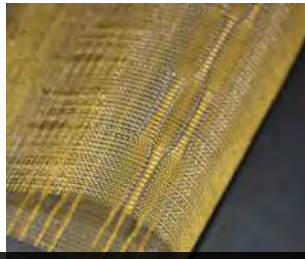
QKTH2-26



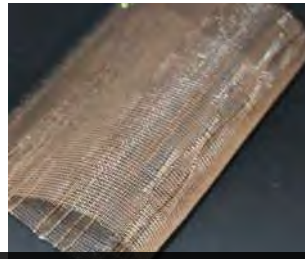
QKTH2-27



QKTH2-29



QKTH-05



QKTH-05B



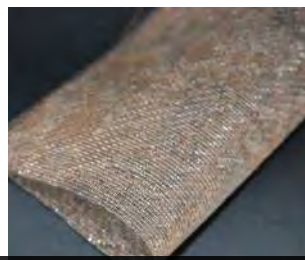
QKTH-07



QKTH-07B



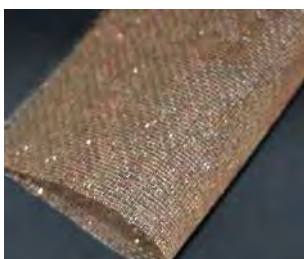
QKTH-08



QKTH-08B



QKTH-08D



QKTH-08I



QKTH-08N



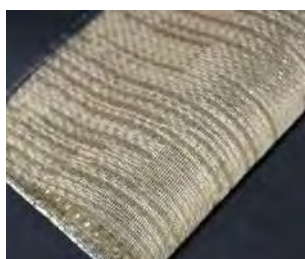
QKTH-10



QKTH-12



QKTH-14-2



QKTH-14-2A



QKTH-14B



QKTH-14D

Application Scenarios

The mesh could be woven with customized logos or symbols or other designs.





08

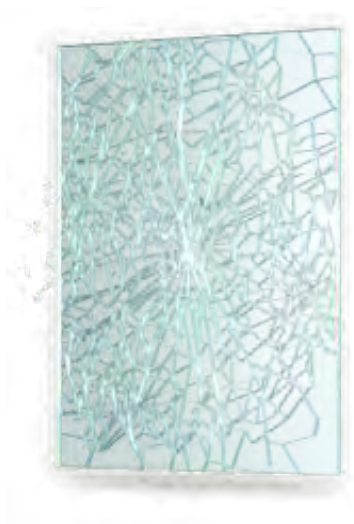
Laminated Glass Metal Mesh

Laminated glass metal mesh, also called safety wired glass or wire mesh glass, is composed of glass and metal mesh materials.

- Architecture
- Decoration
- Design
- Art

Features for Laminated Glass Metal Mesh:

- Safety, even the glass is broken, metal mesh can still keep glass fragments stick together.
- High strength, laminated glass metal mesh is made of high strength glass, can stop illicit intruders in their tracks.
- Attractive, metal mesh offers an innovative range of structural design possibilities.
- Sound insulation, glass can block sound waves, keeping quiet and comfortable surroundings.



Laminated Glass

May crack under pressure, but tends to remain integral, adhering to the plastic vinyl interlayer.

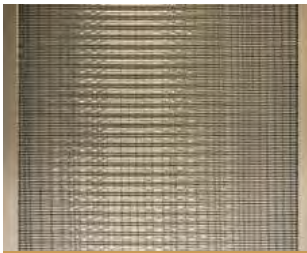


Features for Laminated Glass

Metal meshes from finely woven gauzes to thickly braided weaves and decoratively etched metal foils, offers an innovative range of structural design possibilities.

The weaving structure, highlighted by a metal layer and further revived in interaction with light, achieves a strong aesthetic impression.

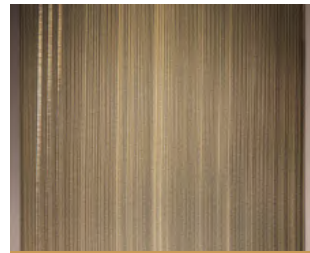
PRODUCT SPECIFICATION



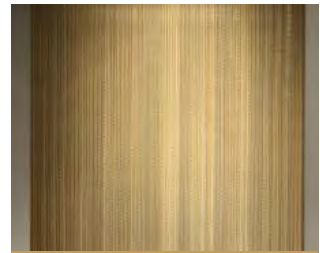
QKGDB-21



QKGDB-22



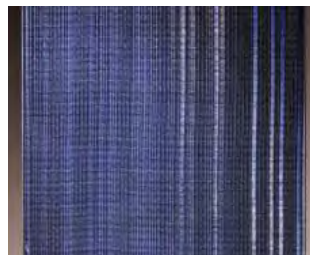
QKGDB-23



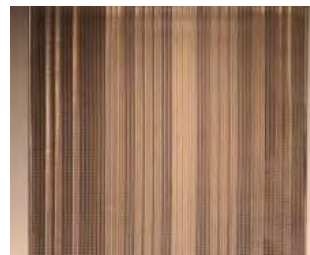
QKGDB-24



QKGDB-25



QKGDB-26



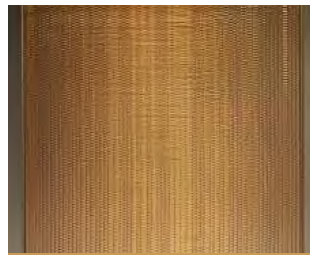
QKGDB-313



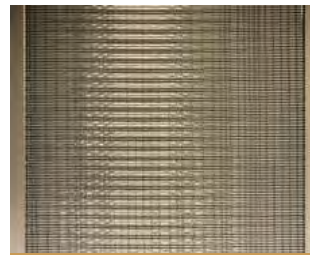
QKGDBX-05



QKGDBX-06



QKGDBX-07



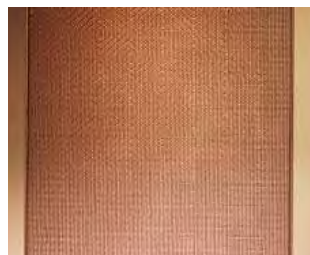
QKGDBX-08



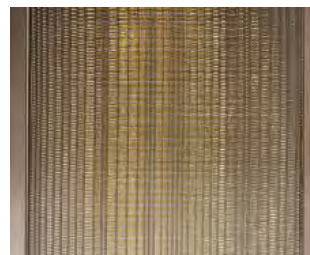
QKGDBX-09



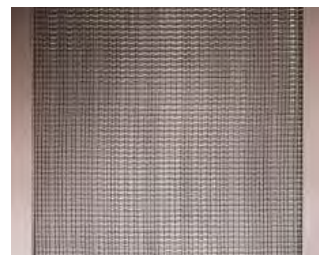
QKGDBX-10



QKGDBX-13



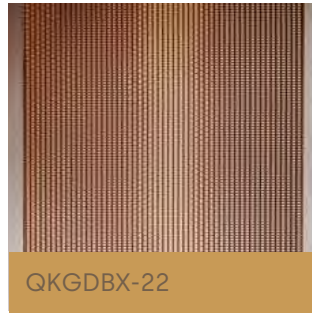
QKGDBX-14



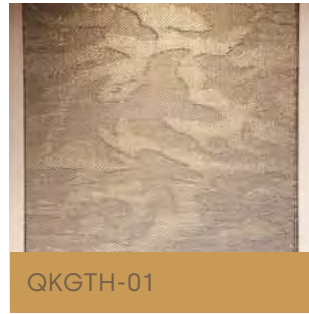
QKGDBX-15



QKGDBX-20



QKGDBX-22



QKGTH-01



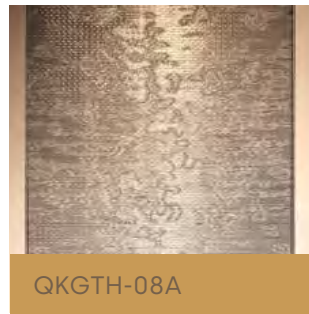
QKGTH-05



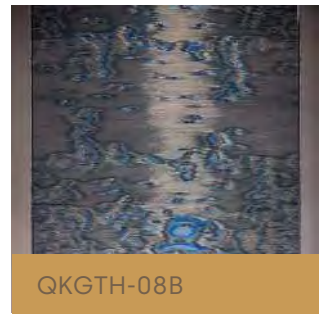
QKGTH-07



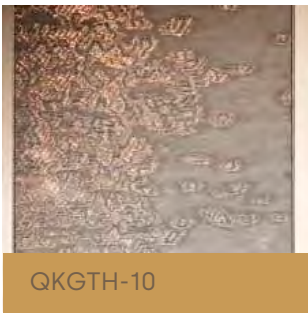
QKGTH-08



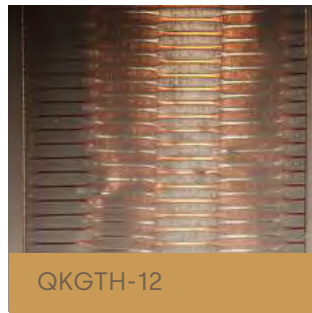
QKGTH-08A



QKGTH-08B



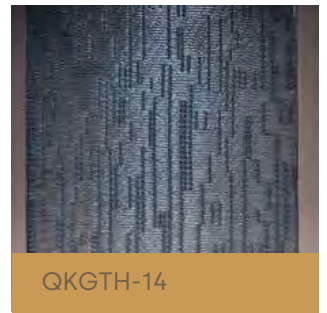
QKGTH-10



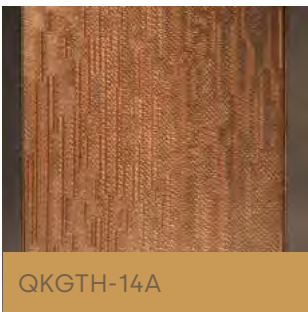
QKGTH-12



QKGTH-13



QKGTH-14



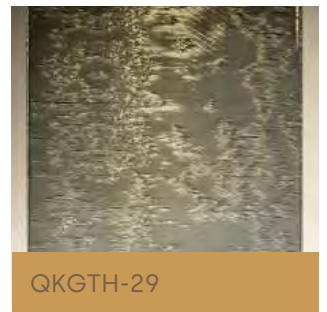
QKGTH-14A



QKGTH-20



QKGTH-20A



QKGTH-29

Facade shading and light control are achieved by selecting the appropriate fabric or mesh.

A photograph of a glass surface reflecting a museum interior. The reflection shows a grid ceiling, a yellow sphere, and a person's hand. The text is overlaid on the left side of the image.

These materials allow the transparency,

Rigidity and structural qualities when laminated in-between two or more layers of glass.

Light reflection creates 3D effects



09

Decorative Perforated Metal Mesh

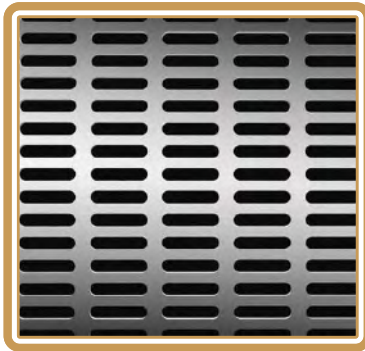
Decorative Perforated Metal Mesh is produced from metal panels , with kinds of hole patterns, round hole, square hole, long round hole and hexagon are common.

Perforated Metal Mesh is mainly made of metal

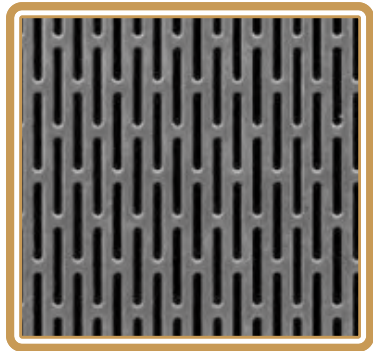
Iron plate, galvanized plate, stainless steel, aluminum plate are the most commonly used.



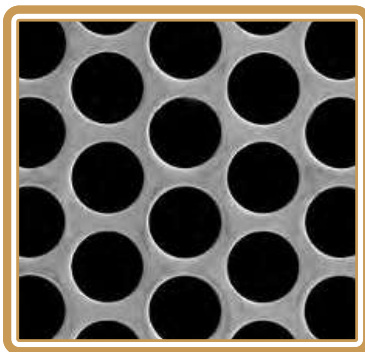
QKDPM-01



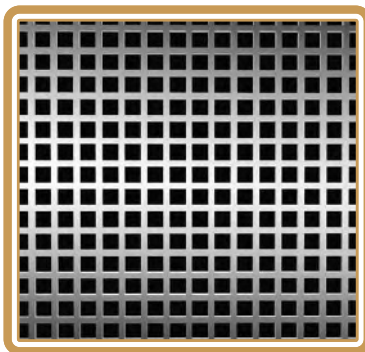
QKDPM-01A



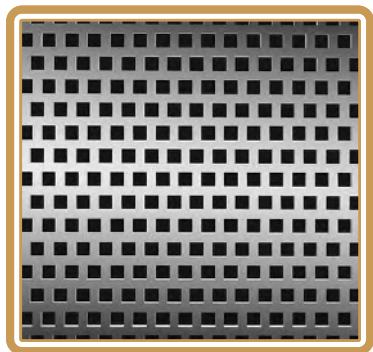
QKDPM-01B



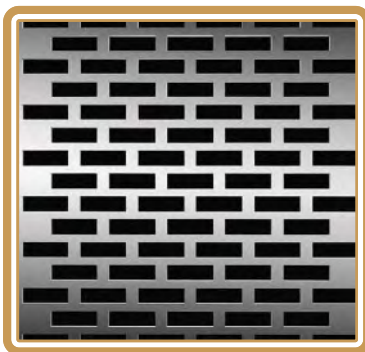
QKDPM-02



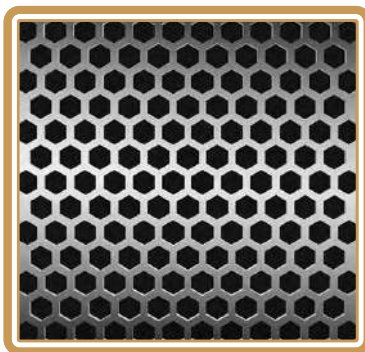
QKDPM-03



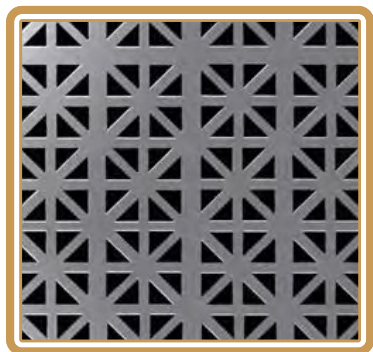
QKDPM-03A



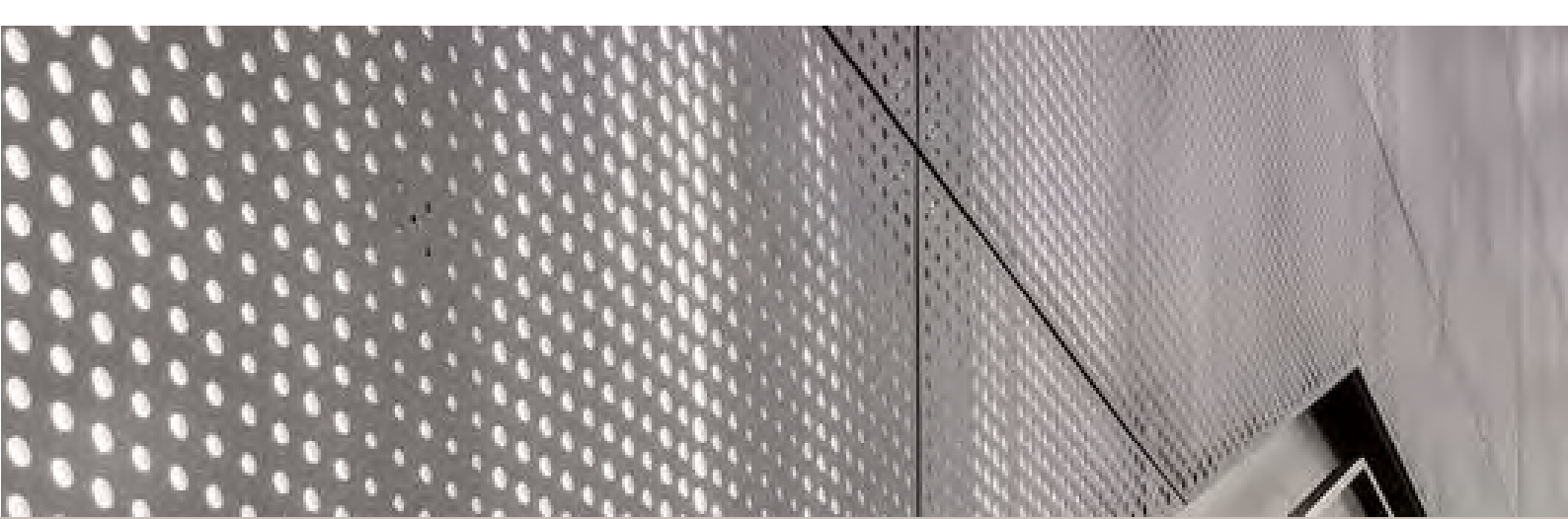
QKDPM-04



QKDPM-05

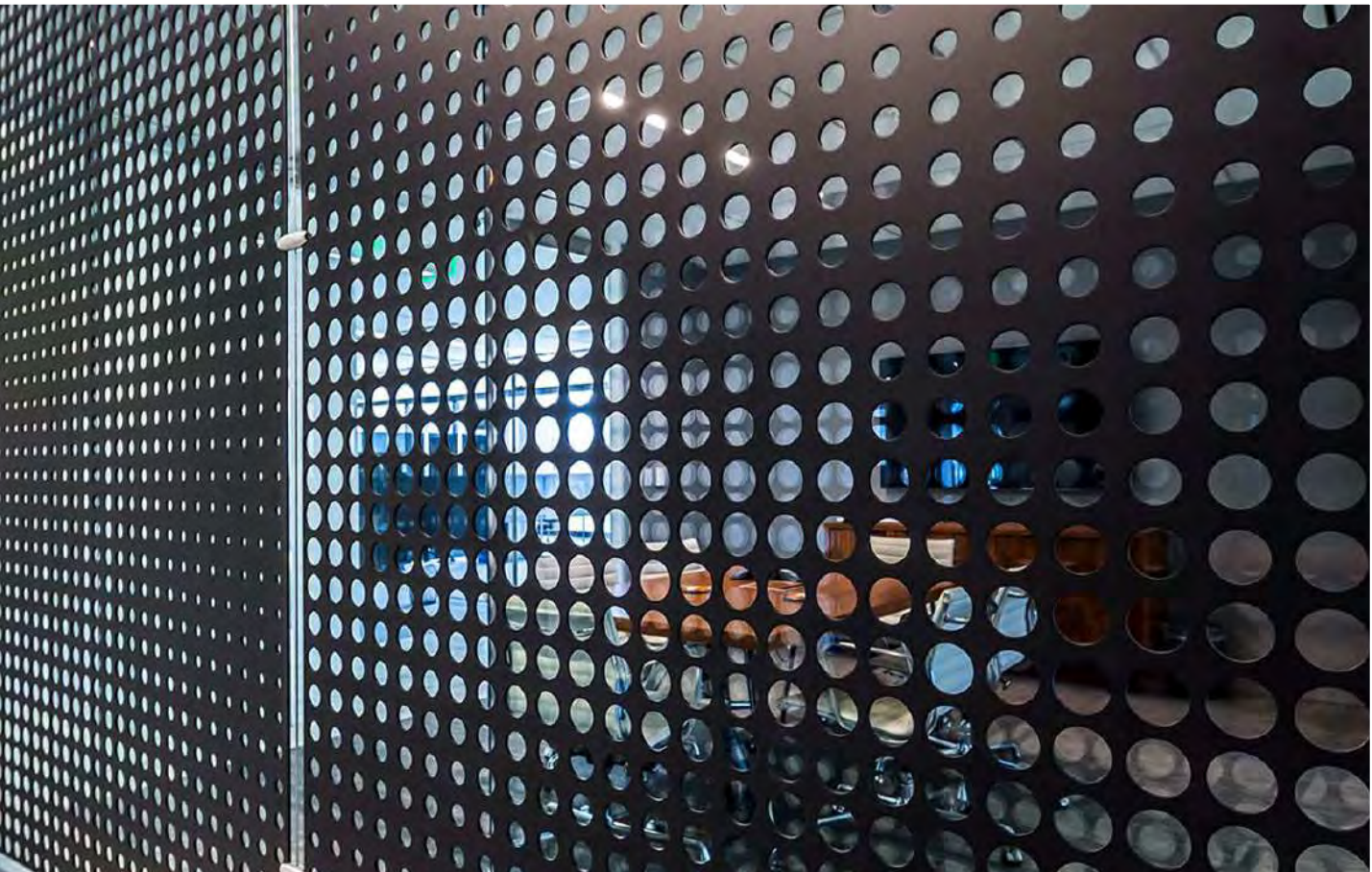


QKDPM-06



Perforated metal mesh is mainly made of metal, iron plate, galvanized plate, stainless steel, aluminum plate are the most commonly used. In some construction industry, perforated sheet is often used as industry decoration perforated mesh such as stairs, ceilings, walls, floors, shades, decorative, sound absorption.





While perforated metal can serve a huge variety of valuable functions, it can also be used for decorative purposes - a favorite among designers.

such as

*stairs, ceilings, walls, floors, shades,
decorative, sound absorption.*



Application Scenarios

Ideal for architecture and design



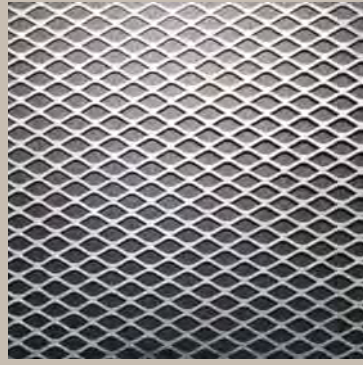
10

Metal Mesh

The expanded metal sheet is available in many sizes, openings, and material types. It is uniformly slit and stretched, forming diamond-shaped openings in the sheet that allow for the passage of light, air, heat, and sound.



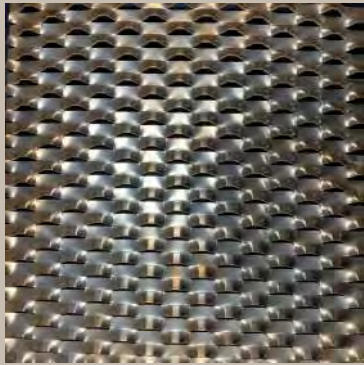
QKDEM-01



QKDEM-02



QKDEM-03



QKDEM-04



QKDEM-05



QKDEM-06

Customized pattern is acceptable.

The products are durable, gorgeous and high-grade, with high technology content, solemn, generous, good stereo effect.

Aluminum expanded metal as a partition wall is widely welcomed in interior and exterior design.





Decorative expanded metal mesh mainly made of aluminum and Al-Mg alloy is broadly used for decoration indoors and outdoors as facades of

Large buildings

Fencing railings

Interior wall

Partition

Barriers.....

Contact details

IINNO Ltd

2101A Nan Fung Centre,
264-298 Castle Peak Road,
Tsuen Wan, Hong Kong

Tel: 0086 (0)769 23010151 / 2
Email: sales@iinno-group.com
www.iinno-group.com



